



Montecito Sanitary District

1042 Monte Cristo Lane
Santa Barbara, CA 93108

A Public Service Agency

Phone: (805) 969-4200
www.montsan.org

BOARD PACKET

For the Regular Board Meeting of

Wednesday, July 17, 2024

1. AGENDA	2
2. PROTECTIVE MEASURES OF DISTRICT FACILITIES (JANUARY 2023 STORM) PROJECT.....	4
3. GENERAL MANAGER’S REPORT	16



Montecito Sanitary District

1042 Monte Cristo Lane
Santa Barbara, CA 93108

A Public Service Agency

Phone: (805) 969-4200
www.montsan.org

AGENDA

For the Regular Meeting of the Board on:

July 17, 2024

The regular meeting of the Governing Board will begin at **12:00 p.m. on July 17, 2024** in the District's Board Room at 1042 Monte Cristo Lane, Santa Barbara, CA 93108.

The public may attend the meeting in person or participate remotely via Zoom using the following virtual meeting details:

By visiting: <https://us02web.zoom.us/j/86118975917>

Or by calling: 1-669-900-6833

Meeting ID: 861 1897 5917

1. CALL TO ORDER

A. ROLL CALL

B. PLEDGE OF ALLEGIANCE

C. PRESIDENT'S REPORT

D. AGENDA CHANGES/DELETIONS

2. PUBLIC COMMENT

Public comment on items not on the agenda is **limited to 3 minutes** and is at the discretion of the Board President. For further instructions, please see [Instructions for Public Comment](#) on the District's website.

3. CONSIDERATION OF AWARDING THE PROTECTIVE MEASURES OF DISTRICT FACILITIES (JANUARY 2023 STORM) PROJECT

It is recommended that the Board discuss and consider:

- i) Awarding a contract with Cushman Contracting (Cushman) for their low bid amount of \$1,154,865 for the creek bank restoration work located at four different project sites within the District's boundary; and
- ii) Authorizing the General Manager to execute the contract and approve expenditures of up to ten percent (10%) of the bid, amounting to \$115,486.50, to cover any cost increases that may result from contract change orders for extra work or other scope changes; and
- iii) Determining that this action is not subject to California Environmental Quality Act (CEQA) pursuant to State CEQA Exempt Status: Categorical Exemption Class 2 (Section 15302) and Class 4 (Section 15304) as well as Statutory Exemption (State Code 15269).

4. CLOSED SESSION

A. PUBLIC EMPLOYEE EVALUATION (GOVERNMENT CODE § 54957)

Title: General Counsel, Colantuono, Highsmith & Whatley, PC

B. CONFERENCE WITH LABOR NEGOTIATOR (GOVERNMENT CODE § 54957.6)

Name of District Negotiator to Attend Closed Session: Aleks Giragosian, District Legal Counsel

Name of Employee and/or Organizations: Service Employees International Union (SEIU) Local 620, Montecito Sanitary District Management Group, General Manager

5. GENERAL MANAGER'S REPORT

General Manager John Weigold will provide informational, nonactionable updates regarding matters before the District.

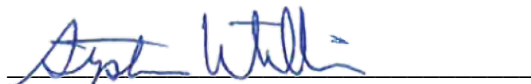
6. ITEMS FOR FUTURE AGENDAS

The next regularly scheduled Board meeting will be held on August 21, 2024 at 12:00 pm.

7. ADJOURNMENT

The Montecito Sanitary District has resumed in-person meetings in accordance with the Brown Act. The District also provides alternative methods of remote participation which permit members of the public to observe and address public meetings remotely via telephone or Zoom. These methods of participation can be accessed through the internet link provided at the top of this agenda.

This agenda was posted on the District website, and at the Montecito Sanitary District Bulletin Board in accordance with the requirements of the Brown Act. Attested by:



Stephen Williams

Business and Administrative Manager/Clerk of the Board

ADA – The Americans with Disabilities Act provides that no qualified individual with a disability shall be excluded from participation in, or denied the benefits of, the District's programs, services or activities because of any disability. If you need special assistance to participate in this meeting, please contact the District Office at 969-4200.



Montecito Sanitary District

1042 Monte Cristo Lane
Santa Barbara, CA 93108

A Public Service Agency

Phone: (805) 969-4200
www.montsan.org

MONTECITO SANITARY DISTRICT

STAFF REPORT – 3

DATE: July 17, 2024
TO: Board of Directors
FROM: John Weigold, General Manager
Bryce Swetek, Engineering Manager
SUBJECT: Consideration of Awarding the Protective Measures of District Facilities (January 2023 Storm) Project

RECOMMENDATION:

Staff recommends that the Board discuss and consider:

1. Awarding a contract with Cushman Contracting (Cushman) for their low bid amount of \$1,154,865 for the creek bank restoration work located at four different project sites within the District's boundary; and
2. Authorizing the General Manager to execute the contract and approve expenditures of up to ten percent (10%) of the bid, amounting to \$115,486.50, to cover any cost increases that may result from contract change orders for extra work or other scope changes.
3. Determining that this action is not subject to California Environmental Quality Act (CEQA) pursuant to State CEQA Exempt Status: Categorical Exemption Class 2 (Section 15302) and Class 4 (Section 15304) as well as Statutory Exemption (State Code 15269).

DISCUSSION:

Background – In January of 2023, District facilities became vulnerable to potential damage/failure due to a storm event. Staff classified these vulnerable facilities into the following projects:

Project 1 - Manhole 616-4D
Project 2 - Manhole 638-4C
Project 3 - Pipe L333-7
Project 4 - Pipe L380-5

Each project is a result of creekbank failures. The purpose of each project is to provide protective measures to the facilities to limit the possibility of damage and provide better

long-term service life. Together, these four projects are considered as the Protective Measures of District Facilities (January 2023 Storm) project (Protective Measures). Select plan sheets describing the location and work of each project are provided as Attachment 1. Staff has been in discussions with property owners as well as communities (Riven Rock/Ennisbrook) to secure land access requirements in addition to District easements. Additionally, Staff and the consulting team are in discussions with environmental agencies to secure environmental permits.

Bidding Process and Results – District staff issued a request for bids for the Protective Measures project on June 12, 2024 (Attachment 2) and opened bids on July 11, 2024. Seven prospective bidders registered for the project and five of them attended a mandatory pre-bid meeting. One Addendum was issued on June 28, 2024 to answer bidder questions and refine the scope of work/contract language. The District ultimately received a single bid from a local company for the project. The bid received is as follows:

	Bidder	Bid Amount	Bid Status
1	Cushman Contracting	\$1,154,865.00	Lowest (Sole) Responsive Bidder

Fiscal Impact – This project was included in the Fiscal Year 2024-25 Capital Improvement Project budget at \$1,100,000. The bid result is within five percent of the budget amount and within expectations. While the bid amount is reasonable, Staff anticipates additional construction costs for construction inspections as well as biological monitoring and reporting. This will result in being over budget; however, Staff anticipates any budget adjustment will be offset by the anticipated FEMA/CalOES reimbursement process.

Analysis – Justifications – The sole bid of \$1,154,865.00 submitted by Cushman is an acceptable bid that is responsive to and meets the requirements of the bid specifications. Staff understands awarding a sole bid is less than ideal but is confident in Cushman to perform the work well based on a long list of prior projects with the District. The change order funding recommendation of \$97,378, or 10%, is typical for this type of work and size of project.

Next Steps – Next steps for the Protective Measures project include:

1. Ongoing communications with environmental permitting agencies to receive approved permits prior to construction.
2. Ongoing communications with FEMA/CalOES seeking reimbursement funding.
3. Ongoing communications with key project members (property owners, communities) to inform project updates, including schedules.
4. Retain construction management/inspection services for the project.

DEPARTMENTS INVOLVED: Engineering and Collections

ATTACHMENTS:

1. Select Plan Sheets
2. Notice of Inviting Sealed Bids

LEGEND

- SURVEY IRON PIN FOUND
- ☀ EXISTING TREE
- ◊ EXISTING CLEAN OUT
- ◊ FH EXISTING FIRE HYDRANT
- ⊗ WV EXISTING WATER VALVE
- ⊗ WM EXISTING WATER METER
- ⊗ GM EXISTING GAS METER
- ⊗ UP EXISTING UTILITY POLE
- MB EXISTING MAILBOX EXISTING
- SIGN EXISTING SIGN
- ⊗ EXISTING SEWER MANHOLE
- EXISTING RIGHT OF WAY
- 310 --- EXISTING CONTOUR (MAJOR)
- --- EXISTING CONTOUR (MINOR)
- ⊖ EXISTING STONE CURB
- ⊗ EXISTING CHAINLINK FENCE
- == EXISTING ROAD (PAVED)
- S - - - - - EXISTING SEWER MAIN
- W - - - - - EXISTING WATERLINE
- G - - - - - EXISTING NATURAL GAS LINE
- OHW - - - - - EXISTING OVERHEAD WIRE
- S - - - - - PROPOSED SEWER MAIN

LIST OF ABBREVIATIONS

- | | |
|---------------------------|---------------------------------|
| AC ASPHALT CONCRETE | MSD MONTECITO SANITARY DISTRICT |
| AB AGGREGATE BASE | MTR METER |
| BW BACK OF WALK | N NORTH |
| BLDG BUILDING CORNER | NE NORTH EAST |
| C CENTER LINE | NW NORTH WEST |
| CF CURB FACE | P PROPERTY LINE |
| CO CLEANOUT | PP POWER POLE |
| CONC CONCRETE | PVMT PAVEMENT |
| CP CONTROL POINT | RD ROOF DRAIN |
| CTV CABLE TV | S SEWER |
| DW DRIVEWAY | S SOUTH |
| E EAST | SE SOUTH EAST |
| E ELECTRICAL | SW SOUTH WEST |
| EP EDGE OF PAVEMENT | SD STORM DRAIN |
| FD CP FOUND CONTROL POINT | SL STREET LIGHT |
| FF FINISH FLOOR | STA STATION |
| FG FINISH GRADE | T TELEPHONE |
| FH FIRE HYDRANT | TC TOP OF CURB |
| FL FLOW LINE | TCN TOP OF CONCRETE |
| FOW FACE OF WALL | TG TOP OF GRATE |
| FS FINISH SURFACE | TP TOP OF PAVEMENT |
| G GAS | TW TOP OF WALL |
| GB GRADE BREAK | TV CABLE TV |
| GM GAS METER | TYP TYPICAL |
| GR GRADE | W WEST |
| HYD HYDRANT | WM WATER METER |
| INV INVERSE | WTR WATER |
| LRG LARGE | WV WATER VALVE |
| MH MANHOLE | LT. LEFT OF CENTERLINE |
| MON MONUMENT | RT. RIGHT OF CENTERLINE |

SURVEY NOTES

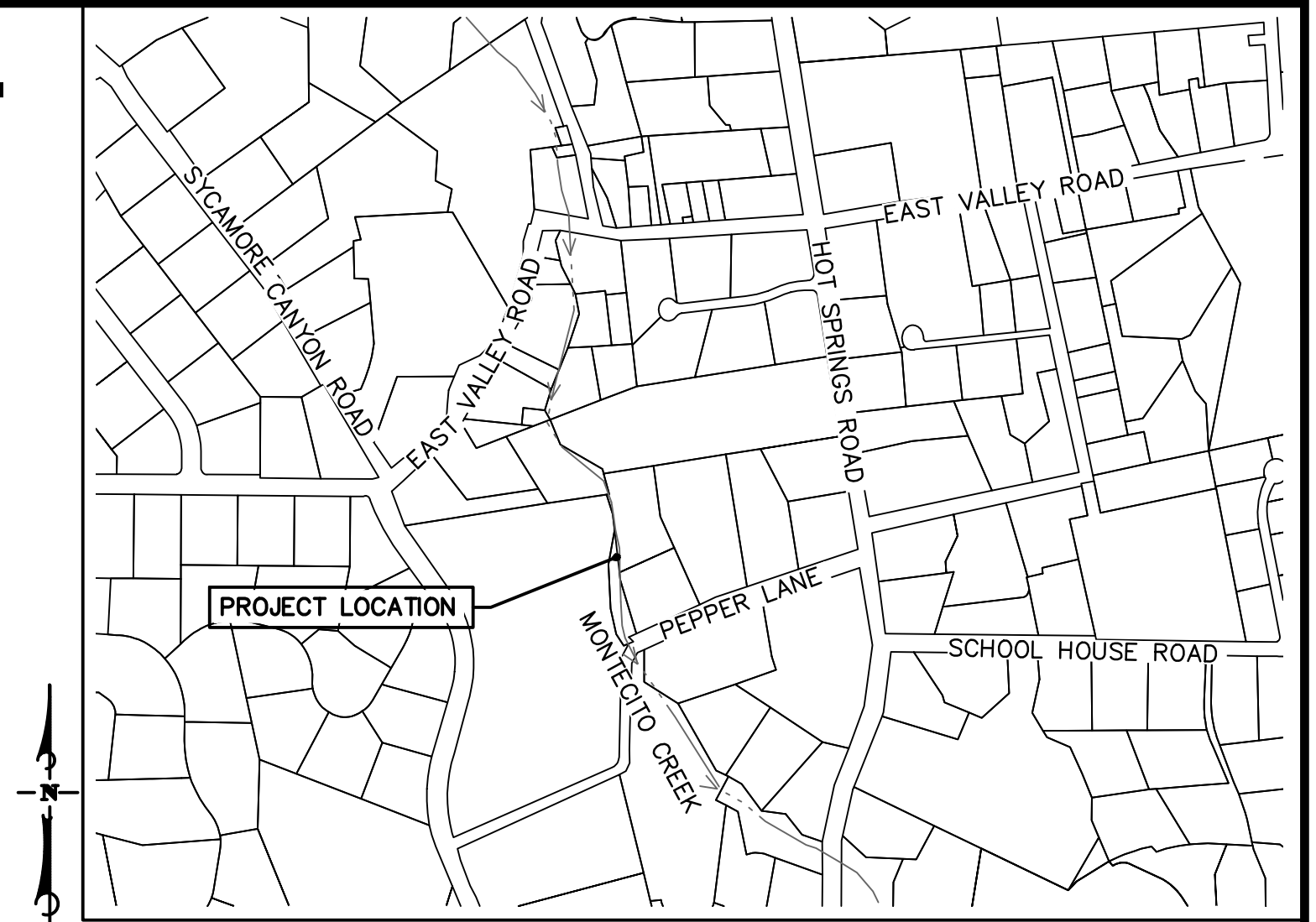
- MAPPING**
TOPOGRAPHIC MAPPING WAS COMPILED AT A SCALE OF 1"=20', WITH A 1 FOOT CONTOUR INTERVAL, FROM DATA COLLECTED IN A FIELD SURVEY PERFORMED USING CONVENTIONAL EQUIPMENT AND PROCEDURES IN SEPTEMBER 2023, AT THE REQUEST OF MONTECITO SANITATION DISTRICT.
- BASIS OF BEARINGS AND COORDINATES**
THE BEARINGS AND DISTANCES SHOWN ON THIS MAP ARE BASED ON THE CALIFORNIA COORDINATE SYSTEM OF 1983 (CCS83), NAD83(2011), ZONE 5, EPOCH 2017.50, DEFINED LOCALLY BY STATIC GNSS AND CONVENTIONAL FIELD TIES TO THE MONTECITO HIGH PRECISION GEODETIC CONTROL NETWORK AS SHOWN ON THE MAP FILED IN BOOK 212, PAGE 48 THROUGH 52 OF RECORD OF SURVEYS. THIS SURVEY TIED TO STATIONS 12 "ELBOW" (PASSIVE), 19 "SINALOA" (PASSIVE), AND 21 "ISABEL" (PASSIVE) OF SAID NETWORK.

THE SITE COMBINATION FACTOR IS 0.99993886 AND THE SITE MAPPING ANGLE IS -0°55'48.27", BOTH CALCULATED AT STATION 19 "SINALOA", HAVING AN ELEVATION OF 94.472 US FEET. TO OBTAIN GROUND LEVEL DISTANCES, MULTIPLY GRID DISTANCES BY 1.00006114, WHICH IS THE INVERSE OF THE PROJECT COMBINATION FACTOR. TO OBTAIN TRUE NORTH AZIMUTHS, SUBTRACT 0°55'48.27" FROM THE GRID AZIMUTHS.
- ELEVATIONS**
ELEVATIONS SHOWN HEREON ARE EXPRESSED IN U.S. SURVEY FEET AND ARE REFERENCED TO THE NORTH AMERICAN VERTICAL DATUM OF 1988 (NAVD88) AS DEFINED LOCALLY BY THE MONTECITO HIGH PRECISION GEODETIC NETWORK AS SHOWN ON THE MAP FILED IN BOOK 212, PAGE 48 THROUGH 52 OF RECORD OF SURVEYS. THIS SURVEY TIED TO STATION 19 "SINALOA" OF SAID MAP. ELEVATION=94.427 FEET.
- UTILITIES**
SURFACE UTILITY FEATURES SHOWN HEREON WERE LOCATED AS A PART OF THE FIELD SURVEY PERFORMED BY STANTEC BASED ON VISIBILITY ON THE DATE OF SURVEY. NO RESEARCH OR MAPPING OF SUBSURFACE UTILITIES HAS BEEN PERFORMED.
- BOUNDARY**
THE BOUNDARY AND EASEMENT INFORMATION SHOWN ON THESE DRAWINGS WAS COMPILED FROM COUNTY APN GIS DATABASE AND SEWER EASEMENT RECORDS. THIS INFORMATION IS FOR VISUAL PURPOSES ONLY. NO BOUNDARY SURVEY WAS CONDUCTED.

CONTROL POINT LISTINGS				
POINT	NORTHING	EASTING	ELEVATION	DESCRIPTION
1	1983741.40	6066184.62	188.08	CP MAP AND STANTEC CONTROL WASHER
2	1984021.43	6066081.22	205.12	CP 1/2" IP AND STANTEC CONTROL PLUG
12	1987838.45	6069719.89	304.29	HPGN "ELBOW" (PASSIVE)
19	1982518.39	6069660.04	94.47	HPGN "SINALOA" (PASSIVE)
21	1981104.93	6067793.84	96.54	HPGN "ISABEL" (PASSIVE)
7282	1984147.90	6066199.04	203.46	CP WP X

PROTECTIVE MEASURES OF DISTRICT FACILITIES (JANUARY 2023 STORM)- PROJECT 1

MONTECITO SANITARY DISTRICT



VICINITY MAP
1" = 250'



ACCESS MAP
1" = 100'

SHEET INDEX

- 1 TITLE SHEET
- 2 NOTES SHEET
- 3 PLAN AND SECTION VIEW
- 4 EROSION CONTROL PLAN AND DETAILS



SURVEY INFORMATION:
CALIFORNIA COORDINATE SYSTEM OF 1983 (CCS83), NAD83(2011), ZONE 5, EPOCH 2017.50, STATIC GNSS AND MONTECITO HIGH PRECISION GEODETIC CONTROL NETWORK AS SHOWN ON THE MAP FILED IN BOOK 212, PAGE 48 THROUGH 52 OF RECORD OF SURVEYS.
NORTH AMERICAN VERTICAL DATUM OF 1988 (NAVD88) MONTECITO HIGH PRECISION GEODETIC NETWORK AS SHOWN ON THE MAP FILED IN BOOK 212, PAGE 48 THROUGH 52 OF RECORD OF SURVEYS.

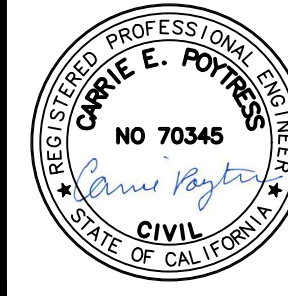
DESIGN JTZ
DRAWN GMK
CHECKED CEP
BID NO. 2024-01
PAGE
ATLAS

SCALE:
VERT. _____
HOR. _____

WARNING
0 1/2 1
IF THIS BAR DOES NOT MEASURE 1", THEN DRAWING IS NOT TO SCALE

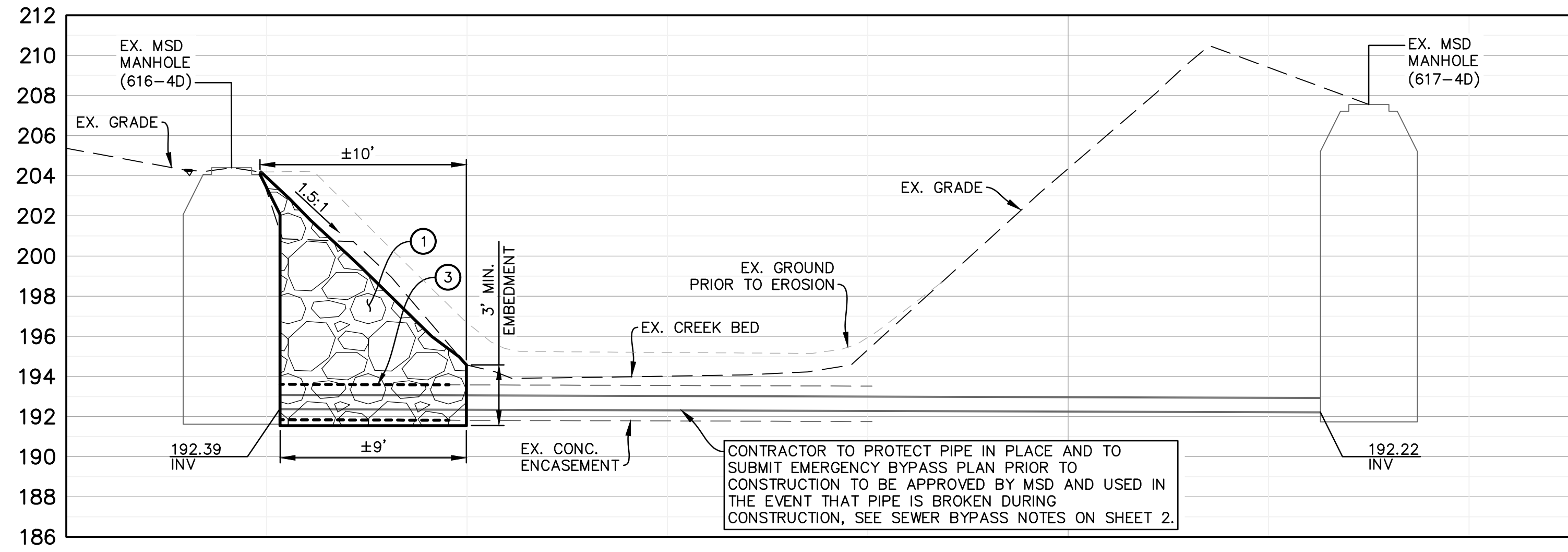
NO.	DATE	REVISION BLOCK	APPD.

PREPARED BY:
Stantec
200 E. Carrillo Street, Suite 101, Santa Barbara, CA 93101
Phone: (805) 963-9532
CARRIE E. POYTRESS 70,345 EXP. 09/2024
PROJECT ENGINEER R.C.E. DATE

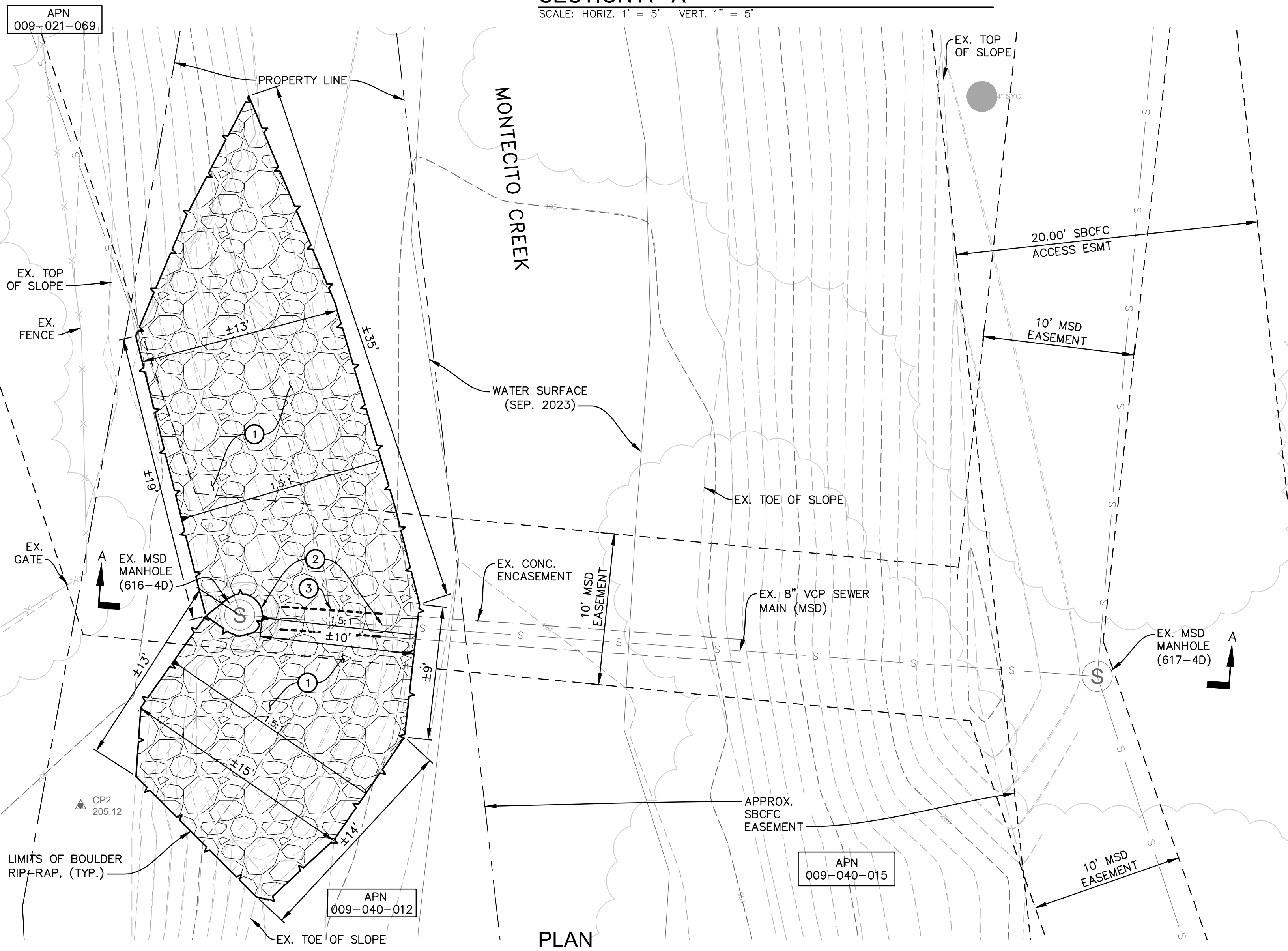


TITLE SHEET
PROJECT 1
MONTECITO CREEK
MSD PROTECTIVE MEASURES
MONTECITO, CA

MSD PROJECT NO.
2024-01
SHEET
1 OF 4
DWG. NO.
AD1-44



SECTION A - A
SCALE: HORIZ. 1" = 5' VERT. 1" = 5'

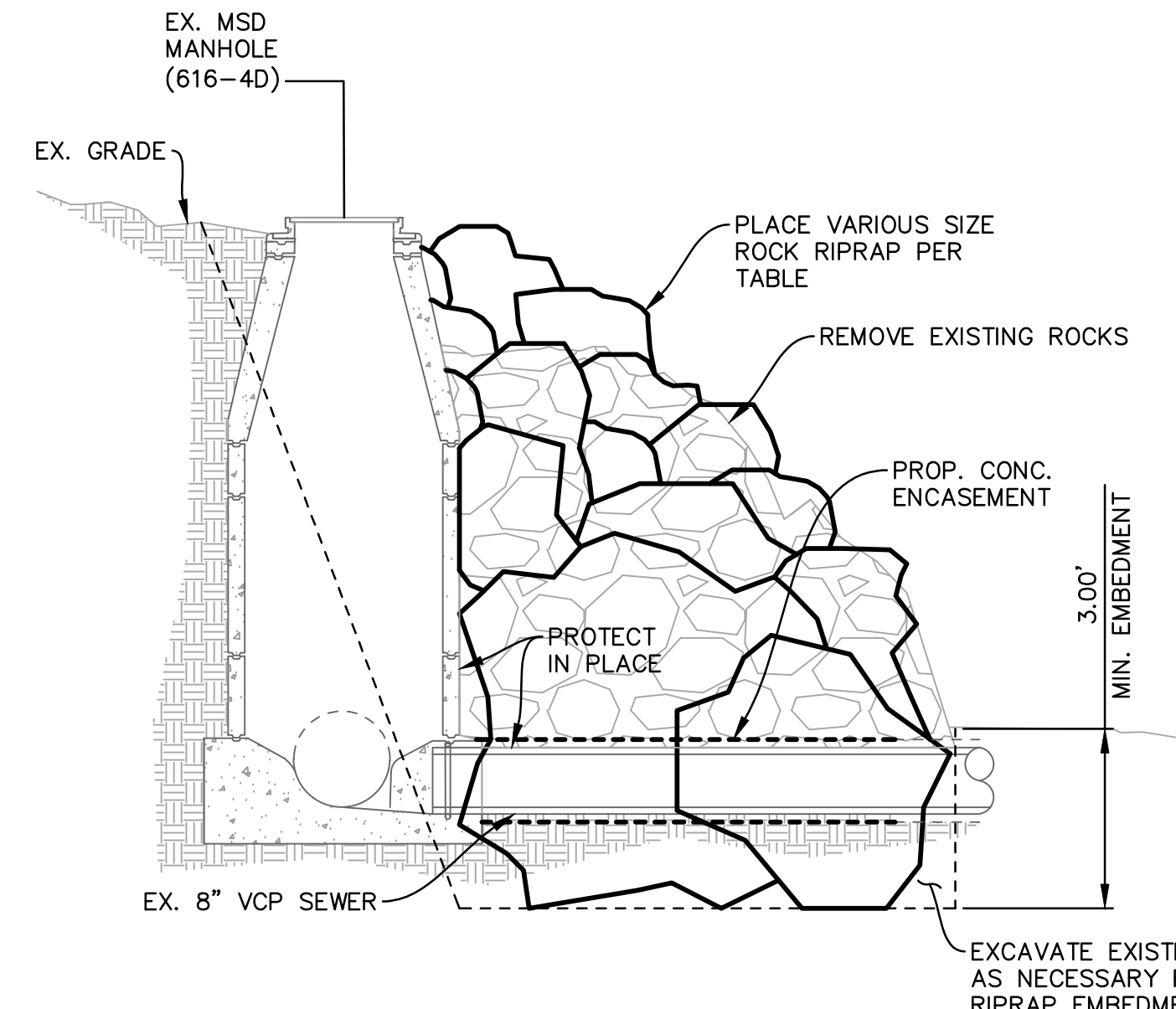


PLAN

CUT AREA TABLE		
ITEM	AREA (SF)	VOLUME (CY)
CUT 616		97

FILL AREA TABLE		
ITEM	AREA (SF)	VOLUME (CY)
FILL 613		113

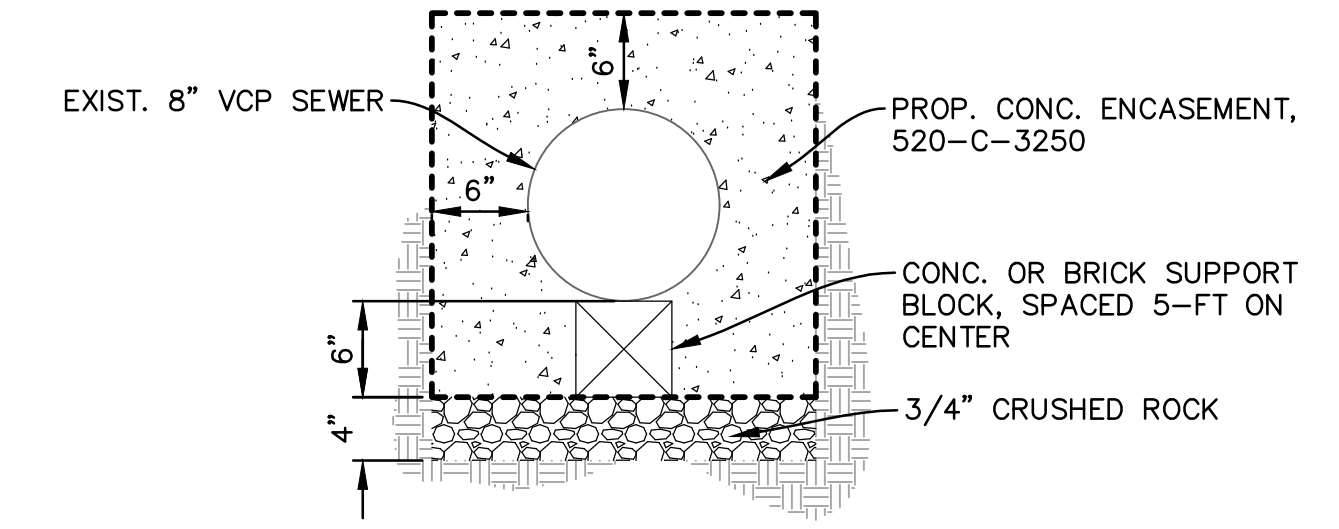
- CONSTRUCTION NOTES**
- REMOVE EXISTING ROCK AND DISPERSE DOWNSTREAM OF PROJECT SITE. PROVIDE VARIOUS SIZE ROCK RIP-RAP EMBEDDED A MINIMUM OF 3-FT INTO NATIVE SOIL PER DETAIL A, THIS SHEET.
 - PROTECT IN PLACE EXISTING SEWER MANHOLE AND EXISTING SEWER MAIN.
 - CONSTRUCT CONCRETE ENCASUREMENT, PER DETAIL B, FROM EXISTING ENCASUREMENT TO SEWER MANHOLE WITH EXPANSION JOINT BETWEEN SEWER MANHOLE AND NEW ENCASUREMENT.



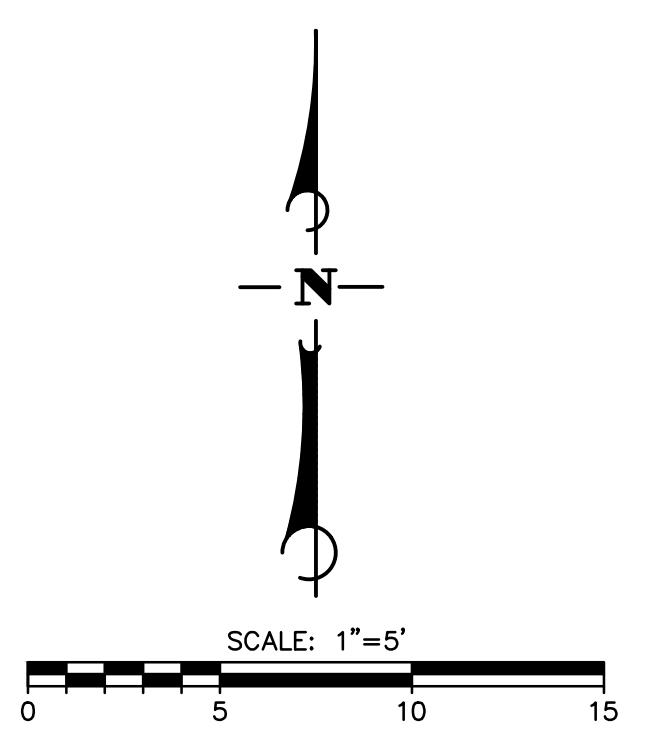
ROCK RIPRAP DETAIL
SCALE: N.T.S.

Description	Value	Units
Class Name	Class X	
Class Order	10	
D15	31	in
D50	44.5	in
D85	59.5	in
D100	84	in
Tminimum	84	in

NOTE: ROCK RIP-RAP SHALL NOT BE SANDSTONE.



CONCRETE ENCASUREMENT DETAIL
SCALE: N.T.S.



ISSUE FOR CONSTRUCTION

DESIGN: CEP CHECKED: JTZ PLOT DATE: 6/5/2024 3:37:52 PM 34-ENG SAVE DATE: 6/4/2024 12:28:45 PM PLOT BY: Poytress, Carrie

SURVEY INFORMATION:
CALIFORNIA COORDINATE SYSTEM OF 1983 (CCS83), NAD83(2011), ZONE 5, EPOCH 2017.50, STATIC GNSS AND MONTECITO HIGH PRECISION GEODETIC CONTROL NETWORK AS SHOWN ON THE MAP FILED IN BOOK 212, PAGE 48 THROUGH 52 OF RECORD OF SURVEYS.
NORTH AMERICAN VERTICAL DATUM OF 1988 (NAVD88) MONTECITO HIGH PRECISION GEODETIC NETWORK AS SHOWN ON THE MAP FILED IN BOOK 212, PAGE 48 THROUGH 52 OF RECORD OF SURVEYS.

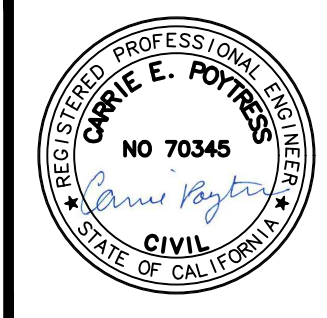
DESIGN: JTZ
DRAWN: GMK
CHECKED: CEP
BID NO.: 2024-01
PAGE: _____
ATLAS: _____

SCALE:
VERT. _____
HOR. _____

WARNING
0 1/2 1
IF THIS BAR DOES NOT MEASURE 1", THEN DRAWING IS NOT TO SCALE

NO.	DATE	REVISION BLOCK	APPD.

PREPARED BY:
Stantec
200 E. Carrillo Street, Suite 101, Santa Barbara, CA 93101
Phone: (805) 963-9532
CARRIE E. POYTRESS 70,345 EXP. 09/2024
PROJECT ENGINEER R.C.E. DATE



**PLAN AND SECTION VIEW
PROJECT 1
MONTECITO CREEK
MSD PROTECTIVE MEASURES**
MONTECITO, CA

MSD PROJECT NO.
2024-01
SHEET
3 OF 4
DWG. NO.
AD1-44



LEGEND

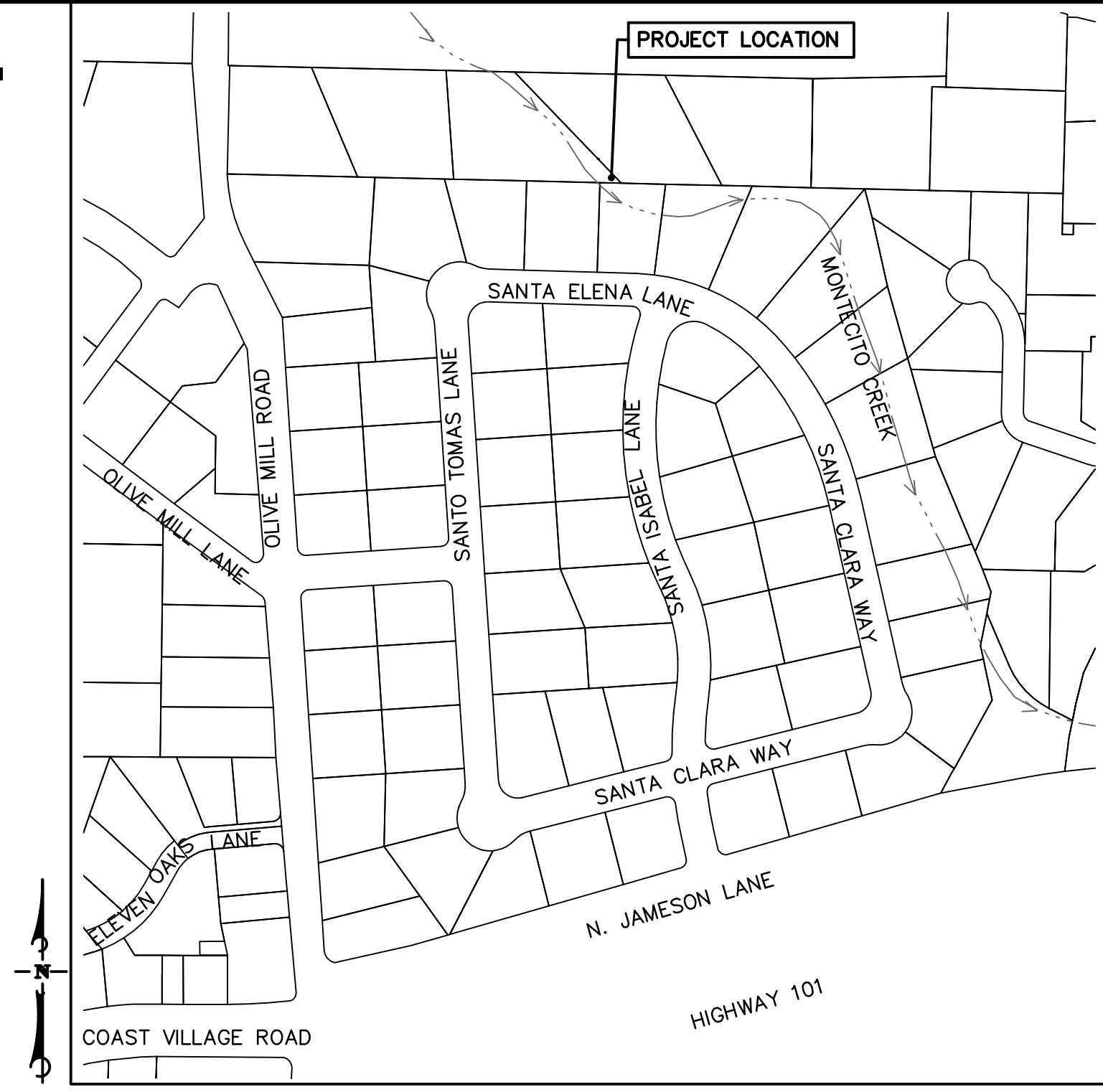
- SURVEY IRON PIN FOUND
- ☼ EXISTING TREE
- EXISTING CLEAN OUT
- ◇ FH EXISTING FIRE HYDRANT
- ⊠ WV EXISTING WATER VALVE
- ⊠ EXISTING WATER METER
- EXISTING UTILITY POLE
- ⊠ EXISTING ELECTRIC METER
- ⊠ MB EXISTING MAILBOX EXISTING
- SIGV EXISTING SIGN
- ⊙ EXISTING SEWER MANHOLE
- EXISTING RIGHT OF WAY
- 310 --- EXISTING CONTOUR (MAJOR)
- --- EXISTING CONTOUR (MINOR)
- ⊠ EXISTING STONE CURB
- ⊠ EXISTING CHAINLINK FENCE
- EXISTING ROAD (PAVED)
- S - - - - - EXISTING SEWER MAIN
- W - - - - - EXISTING WATERLINE
- G - - - - - EXISTING NATURAL GAS LINE
- OHW - - - - - EXISTING OVERHEAD WIRE
- S - - - - - PROPOSED SEWER MAIN

LIST OF ABBREVIATIONS

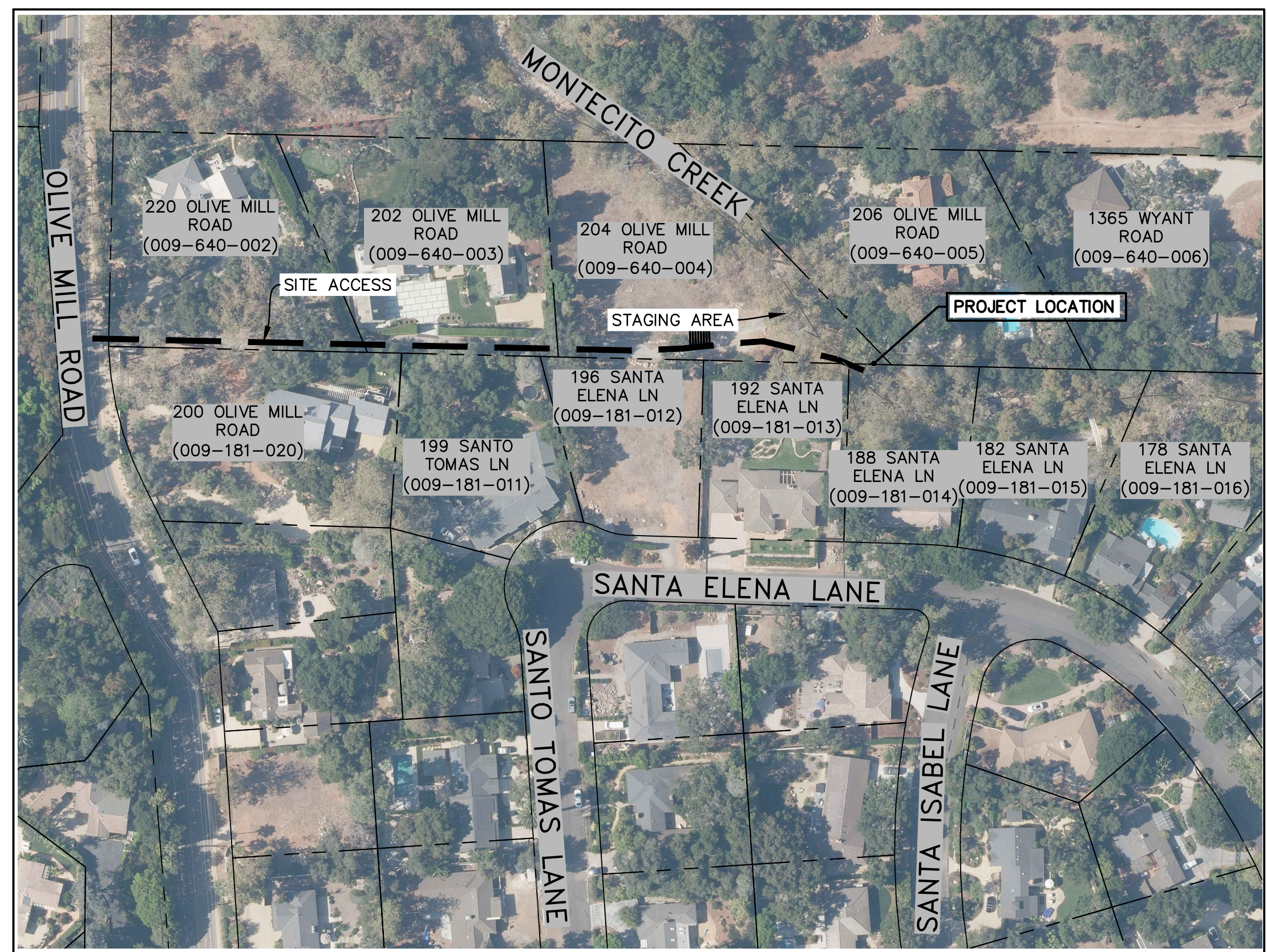
- | | |
|--------------------------------|---|
| AC ASPHALT CONCRETE | MTR METER |
| AB AGGREGATE BASE | N NORTH |
| BW BACK OF WALK | NE NORTH EAST |
| BLDG BUILDING CORNER | NW NORTH WEST |
| C CENTER LINE | P PROPERTY LINE |
| CF CURB FACE | PP POWER POLE |
| CO CLEANOUT | PVMT PAVEMENT |
| CONC CONCRETE | RD ROOF DRAIN |
| CP CONTROL POINT | S SEWER |
| CTV CABLE TV | S SOUTH |
| DW DRIVEWAY | SBCOFC SANTA BARBARA COUNTY FLOOD CONTROL |
| E EAST | SE SOUTH EAST |
| E ELECTRICAL | SW SOUTH WEST |
| ESTM EASEMENT | SD STORM DRAIN |
| EP EDGE OF PAVEMENT | SL STREET LIGHT |
| FD CP FOUND CONTROL POINT | STA STATION |
| FF FINISH FLOOR | T TELEPHONE |
| FG FINISH GRADE | TC TOP OF CURB |
| FH FIRE HYDRANT | TCN TOP OF CONCRETE |
| FL FLOW LINE | TC TOP OF GRATE |
| FLOW FACE OF WALL | TP TOP OF PAVEMENT |
| FS FINISH SURFACE | TW TOP OF WALL |
| G GAS | TV CABLE TV |
| GB GRADE BREAK | TYP TYPICAL |
| GM GAS METER | W WEST |
| GR GRADE | WM WATER METER |
| HYD HYDRANT | WTR WATER |
| INV INVERSE | WV WATER VALVE |
| LRG LARGE | LT. LEFT OF CENTERLINE |
| MH MANHOLE | RT. RIGHT OF CENTERLINE |
| MON MONUMENT | |
| MSD MONTECITO SANITARY DSITRCT | |

PROTECTIVE MEASURES OF DISTRICT FACILITIES (JANUARY 2023 STORM)- PROJECT 2

MONTECITO SANITARY DISTRICT



VICINITY MAP
1" = 250'



ACCESS MAP
1" = 100'

SURVEYORS NOTES

- MAPPING**
TOPOGRAPHIC MAPPING WAS COMPILED AT A SCALE OF 1"=20', WITH A 1 FOOT CONTOUR INTERVAL, FROM DATA COLLECTED IN A FIELD SURVEY PERFORMED USING CONVENTIONAL EQUIPMENT AND PROCEDURES IN SEPTEMBER 2023, AT THE REQUEST OF MONTECITO SANITATION DISTRICT.
- BASIS OF BEARINGS AND COORDINATES**
THE BEARINGS AND DISTANCES SHOWN ON THIS MAP ARE BASED ON THE CALIFORNIA COORDINATE SYSTEM OF 1983 (CCS83), NAD83(2011), ZONE 5, EPOCH 2017.50, DEFINED LOCALLY BY STATIC GNSS AND CONVENTIONAL FIELD TIES TO THE MONTECITO HIGH PRECISION GEODETIC CONTROL NETWORK AS SHOWN ON THE MAP FILED IN BOOK 212, PAGE 48 THROUGH 52 OF RECORD OF SURVEYS. THIS SURVEY TIED TO STATIONS 12 "ELBOW" (PASSIVE), 19 "SINALOA" (PASSIVE), AND 21 "ISABEL" (PASSIVE) OF SAID NETWORK.

THE SITE COMBINATION FACTOR IS 0.99993886 AND THE SITE MAPPING ANGLE IS -0°55'48.27", BOTH CALCULATED AT STATION 19 "SINALOA", HAVING AN ELEVATION OF 94.472 US FEET. TO OBTAIN GROUND LEVEL DISTANCES, MULTIPLY GRID DISTANCES BY 1.00006114, WHICH IS THE INVERSE OF THE PROJECT COMBINATION FACTOR. TO OBTAIN TRUE NORTH AZIMUTHS, SUBTRACT 0°55'48.27" FROM THE GRID AZIMUTHS.
- ELEVATIONS**
ELEVATIONS SHOWN HEREON ARE EXPRESSED IN U.S. SURVEY FEET AND ARE REFERENCED TO THE NORTH AMERICAN VERTICAL DATUM OF 1988 (NAVD88) AS DEFINED LOCALLY BY THE MONTECITO HIGH PRECISION GEODETIC NETWORK AS SHOWN ON THE MAP FILED IN BOOK 212, PAGE 48 THROUGH 52 OF RECORD OF SURVEYS. THIS SURVEY TIED TO STATION 19 "SINALOA" OF SAID MAP. ELEVATION=94.427 FEET.
- UTILITIES**
SURFACE UTILITY FEATURES SHOWN HEREON WERE LOCATED AS A PART OF THE FIELD SURVEY PERFORMED BY STANTEC BASED ON VISIBILITY ON THE DATE OF SURVEY. NO RESEARCH OR MAPPING OF SUBSURFACE UTILITIES HAS BEEN PERFORMED.
- BOUNDARY**
THE BOUNDARY AND EASEMENT INFORMATION SHOWN ON THESE DRAWINGS WAS COMPILED FROM COUNTY APN GIS DATABASE AND SEWER EASEMENT RECORDS. THIS INFORMATION IS FOR VISUAL PURPOSES ONLY. NO BOUNDARY SURVEY WAS CONDUCTED.

CONTROL POINT LISTING

POINT	NORTHING	EASTING	ELEVATION	DESCRIPTION
7	1981372.45	6067521.68	108.35	CP SCRIBED X IN MH APRON
8	1981285.45	6067411.67	106.18	CP 1/2" IP AND STANTECT CONTROL PLUG
10	1981419.41	6067606.94	109.63	CP MAG IN BRIDGE DECK
12	1987838.45	6069719.89	304.29	HPGN "ELBOW" (PASSIVE)
19	1982518.39	6069660.04	94.47	HPGN "SINALOA" (PASSIVE)
21	1981104.93	6067793.84	96.54	HPGN "ISABEL" (PASSIVE)

SHEET INDEX

- TITLE SHEET
- NOTES SHEET
- PLAN AND SECTION VIEW
- EROSION CONTROL PLAN AND DETAILS

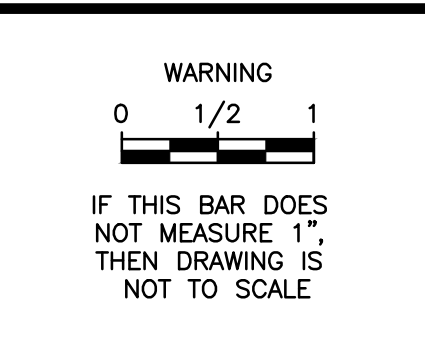


SURVEY INFORMATION:
CALIFORNIA COORDINATE SYSTEM OF 1983 (CCS83), NAD83(2011), ZONE 5, EPOCH 2017.50, STATIC GNSS AND MONTECITO HIGH PRECISION GEODETIC CONTROL NETWORK AS SHOWN ON THE MAP FILED IN BOOK 212, PAGE 48 THROUGH 52 OF RECORD OF SURVEYS.

NORTH AMERICAN VERTICAL DATUM OF 1988 (NAVD88) MONTECITO HIGH PRECISION GEODETIC NETWORK AS SHOWN ON THE MAP FILED IN BOOK 212, PAGE 48 THROUGH 52 OF RECORD OF SURVEYS.

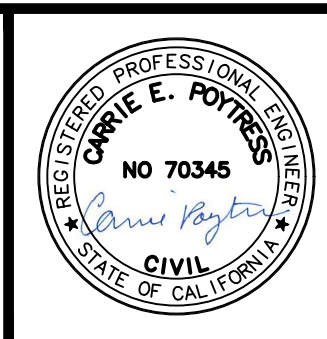
DESIGN JTZ
DRAWN GMK
CHECKED CEP
BID NO. 2024-01
PAGE _____
ATLAS _____

SCALE:
VERT. _____
HOR. _____



NO.	DATE	REVISION BLOCK	APPD.

PREPARED BY:
Stantec
200 E. Carrillo Street, Suite 101, Santa Barbara, CA 93101
Phone: (805) 963-9532
CARRIE E. POYTRESS 70,345 EXP. 09/2024
PROJECT ENGINEER R.C.E. DATE

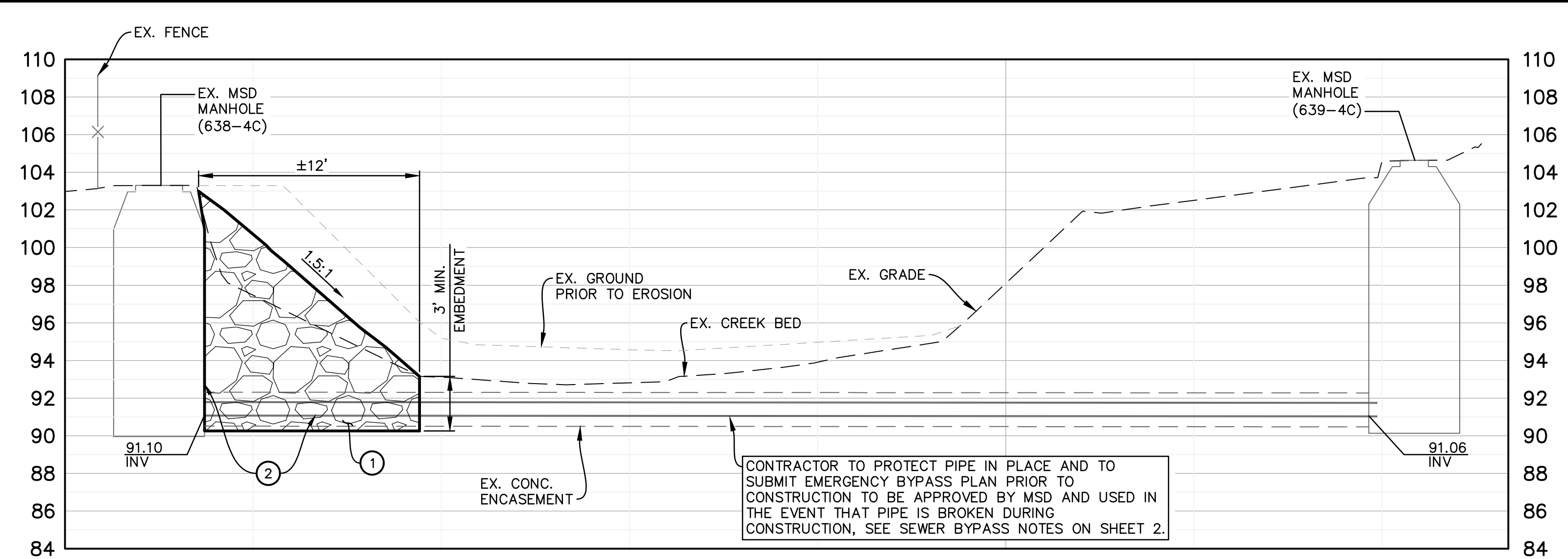
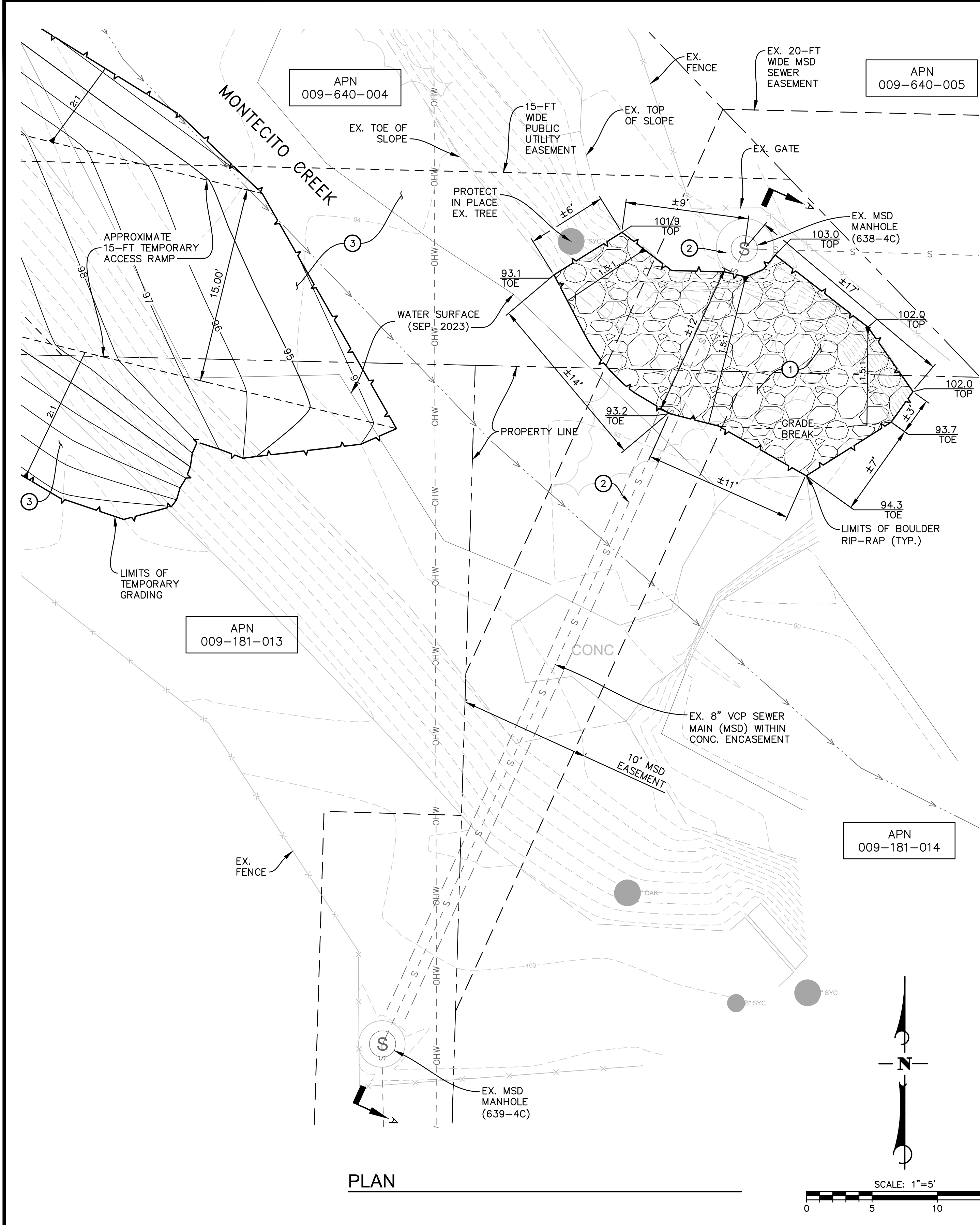


TITLE SHEET
PROJECT 2
MONTECITO CREEK
MSD PROTECTIVE MEASURES
MONTECITO, CA

MSD PROJECT NO.
2024-01
SHEET
1 OF 4
DWG. NO.
AD1-41

DESIGN: CEP CHECKED: JTZ PLOT DATE: 6/4/2024 12:30:33 PM PLOT BY: Poytress, Carrie

ISSUE FOR CONSTRUCTION

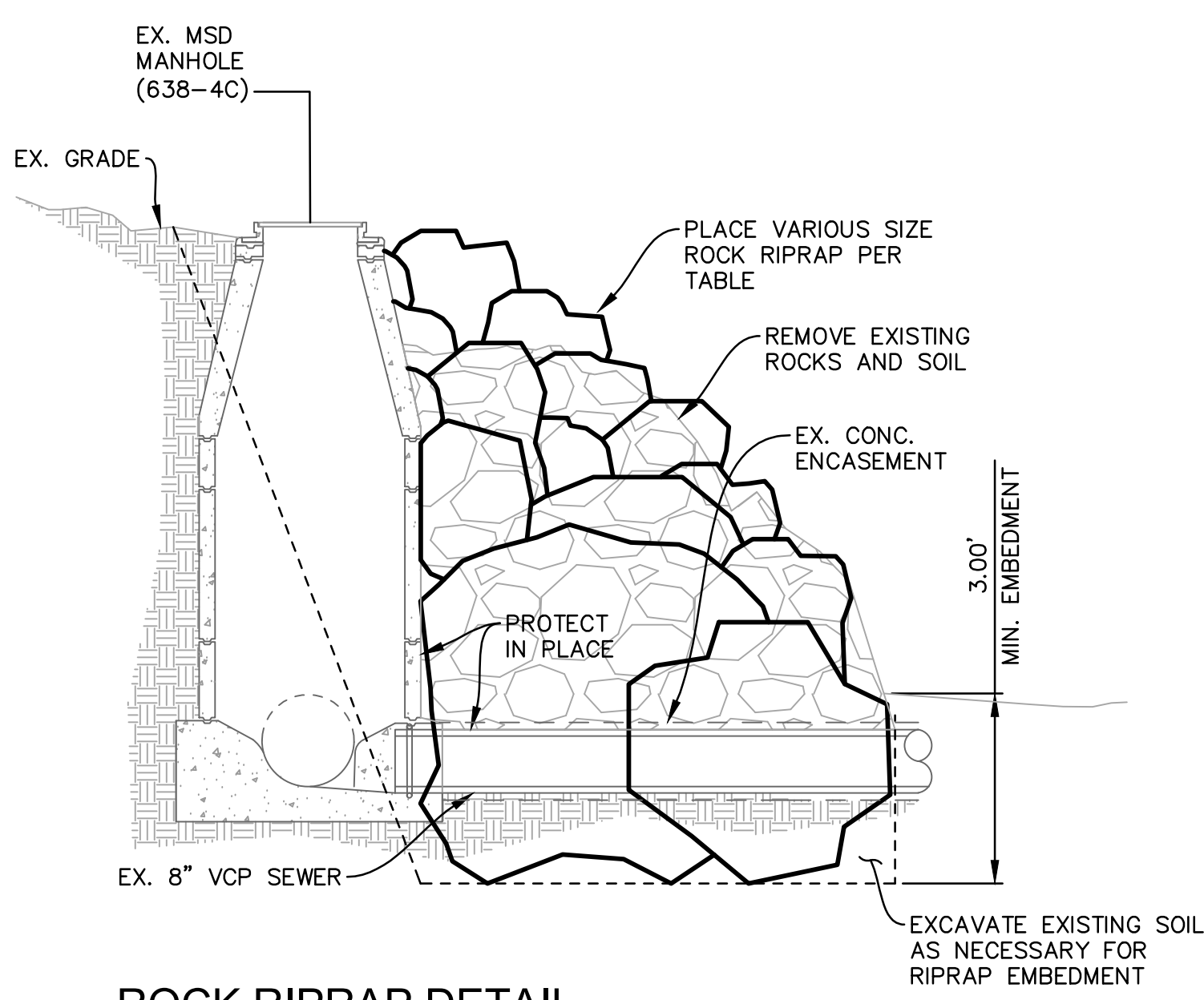


SECTION A - A
SCALE: HORIZ. 1" = 5' VERT. 1" = 5'

CUT AREA TABLE		
ITEM	AREA (SF)	VOLUME (CY)
CUT	279	29

FILL AREA TABLE		
ITEM	AREA (SF)	VOLUME (CY)
FILL	279	49

- CONSTRUCTION NOTES**
- REMOVE EXISTING ROCK AND SOIL AND PROVIDE VARIOUS SIZE ROCK RIP-RAP EMBEDDED A MINIMUM OF 3-FT INTO NATIVE SOIL PER DETAIL A, THIS SHEET.
 - PROTECT IN PLACE EXISTING SEWER MANHOLE AND EXISTING SEWER MAIN.
 - CONTRACTOR SHALL TAKE PHOTOS AND VIDEO OF THE EXISTING SITE CONDITIONS INCLUDING THE ACCESS PATH THROUGH PRIVATE PROPERTY, THE CREEK BANKS, AND CREEK BOTTOM PRIOR TO CONSTRUCTION. AFTER THE RIP-RAP CONSTRUCTION IS COMPLETE AND IN-PLACE AROUND THE EXISTING SEWER MANHOLE, THE CONTRACTOR SHALL RESTORE ALL CREEK BANKS, CREEK BOTTOM, AND ACCESS PATH THROUGH PRIVATE PROPERTY THAT HAVE BEEN DISTURBED BY CONSTRUCTION ACTIVITIES, INCLUDING THE TEMPORARY ACCESS RAMP, TO PRE-CONSTRUCTION CONDITIONS AS SHOWN ON THESE PLANS AND PER THE PHOTOS AND VIDEO TAKEN PRIOR TO CONSTRUCTION TO THE SATISFACTION OF THE PROPERTY OWNERS AND THE DISTRICT.



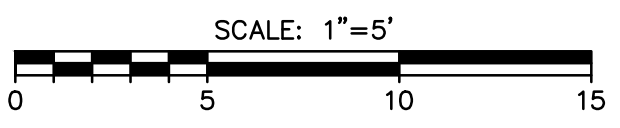
ROCK RIPRAP DETAIL
SCALE: N.T.S.

Description	Value	Units
Class Name	Class VIII	
Class Order	8	
D15	22	in
D50	31.5	in
D85	42.5	in
D100	60	in
Tminimum	60	in

NOTE: ROCK RIP-RAP SHALL NOT BE SANDSTONE.



PLAN



SURVEY INFORMATION:
CALIFORNIA COORDINATE SYSTEM OF 1983 (CCS83), NAD83(2011), ZONE 5, EPOCH 2017.50, STATIC GNSS AND MONTECITO HIGH PRECISION GEODETIC CONTROL NETWORK AS SHOWN ON THE MAP FILED IN BOOK 212, PAGE 48 THROUGH 52 OF RECORD OF SURVEYS.
NORTH AMERICAN VERTICAL DATUM OF 1988 (NAVD88) MONTECITO HIGH PRECISION GEODETIC NETWORK AS SHOWN ON THE MAP FILED IN BOOK 212, PAGE 48 THROUGH 52 OF RECORD OF SURVEYS.

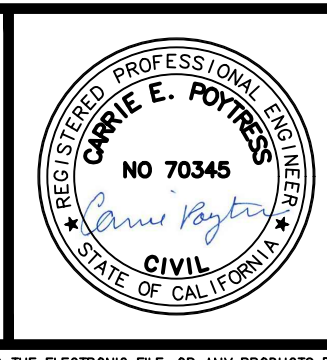
DESIGN JTZ
DRAWN GMK
CHECKED CEP
BID NO. 2024-01
PAGE
ATLAS

SCALE:
VERT. _____
HOR. _____

WARNING
0 1/2 1
IF THIS BAR DOES NOT MEASURE 1", THEN DRAWING IS NOT TO SCALE

NO.	DATE	REVISION BLOCK	APPD.

PREPARED BY:
Stantec
200 E. Carrillo Street, Suite 101, Santa Barbara, CA 93101
Phone: (805) 963-9532
CARRIE E. POYTRESS 70,345 EXP. 09/2024
PROJECT ENGINEER R.C.E. DATE



**PLAN AND SECTION VIEW
PROJECT 2
MONTECITO CREEK
MSD PROTECTIVE MEASURES**
MONTECITO, CA

MSD PROJECT NO.
2024-01
SHEET
3 OF **4**
DWG. NO.
AD1-41

DESIGN CEP CHECKED JTZ PLOT DATE: 6/4/2024 12:30:33 PM PLOT BY: Poytress, Carrie

ISSUE FOR CONSTRUCTION

LEGEND

- SURVEY IRON PIN FOUND
- ☀ EXISTING TREE
- CD= EXISTING CLEAN OUT
- ◇ FH EXISTING FIRE HYDRANT
- ⊗ WV EXISTING WATER VALVE
- ⊗ WM EXISTING WATER METER
- ⊗ GM EXISTING GAS METER
- ⊗ UP EXISTING UTILITY POLE
- ⊗ MB EXISTING MAILBOX EXISTING
- ⊗ SIGN EXISTING SIGN
- ⊗ OSW EXISTING SEWER MANHOLE
- EXISTING RIGHT OF WAY
- 310 --- EXISTING CONTOUR (MAJOR)
- --- EXISTING CONTOUR (MINOR)
- ⊖ EXISTING STONE CURB
- ⊗ EXISTING CHAINLINK FENCE
- == EXISTING ROAD (PAVED)
- S - - - - EXISTING SEWER MAIN
- W - - - - EXISTING WATERLINE
- G - - - - EXISTING NATURAL GAS LINE
- OHW - - - - EXISTING OVERHEAD WIRE
- S - - - - PROPOSED SEWER MAIN

LIST OF ABBREVIATIONS

- | | |
|---------------------------|---------------------------------|
| AC ASPHALT CONCRETE | MSD MONTECITO SANITARY DISTRICT |
| AB AGGREGATE BASE | MTR METER |
| BW BACK OF WALK | N NORTH |
| BLDG BUILDING CORNER | NE NORTH EAST |
| C CENTER LINE | NW NORTH WEST |
| CF CURB FACE | P PROPERTY LINE |
| CO CLEANOUT | PP POWER POLE |
| CONC CONCRETE | PVMT PAVEMENT |
| CP CONTROL POINT | RD ROOF DRAIN |
| CTV CABLE TV | S SEWER |
| DW DRIVEWAY | S SOUTH |
| E EAST | SE SOUTH EAST |
| E ELECTRICAL | SW SOUTH WEST |
| EP EDGE OF PAVEMENT | SD STORM DRAIN |
| FD CP FOUND CONTROL POINT | SL STREET LIGHT |
| FF FINISH FLOOR | STA STATION |
| FG FINISH GRADE | T TELEPHONE |
| FH FIRE HYDRANT | TC TOP OF CURB |
| FL FLOW LINE | TCN TOP OF CONCRETE |
| FOW FACE OF WALL | TG TOP OF GRATE |
| FS FINISH SURFACE | TP TOP OF PAVEMENT |
| G GAS | TW TOP OF WALL |
| GB GRADE BREAK | TV CABLE TV |
| GM GAS METER | TYP TYPICAL |
| GR GRADE | W WEST |
| HYD HYDRANT | WM WATER METER |
| INV INVERSE | WTR WATER |
| LRG LARGE | WV WATER VALVE |
| MH MANHOLE | LT. LEFT OF CENTERLINE |
| MON MONUMENT | RT. RIGHT OF CENTERLINE |

SURVEY NOTES

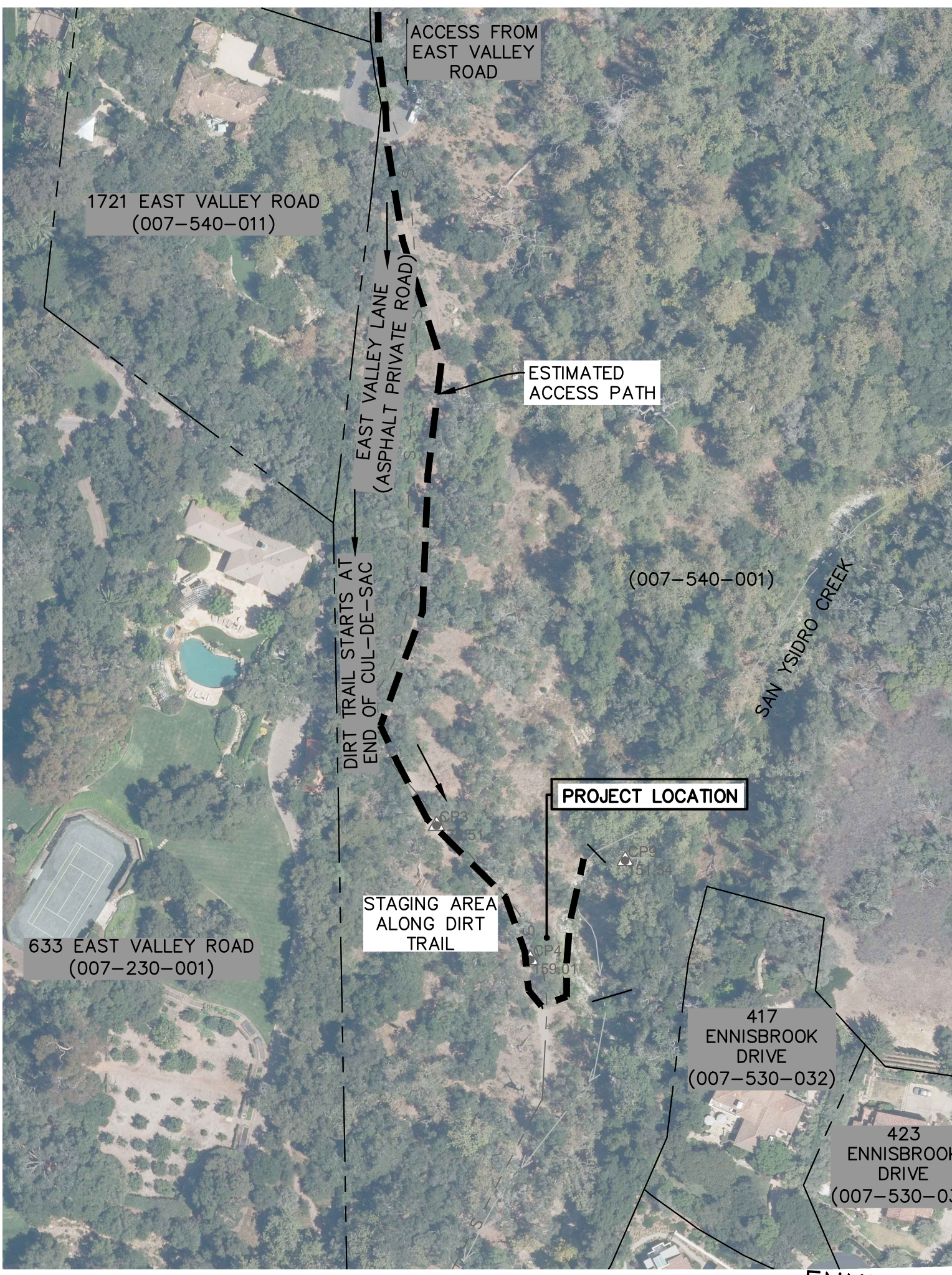
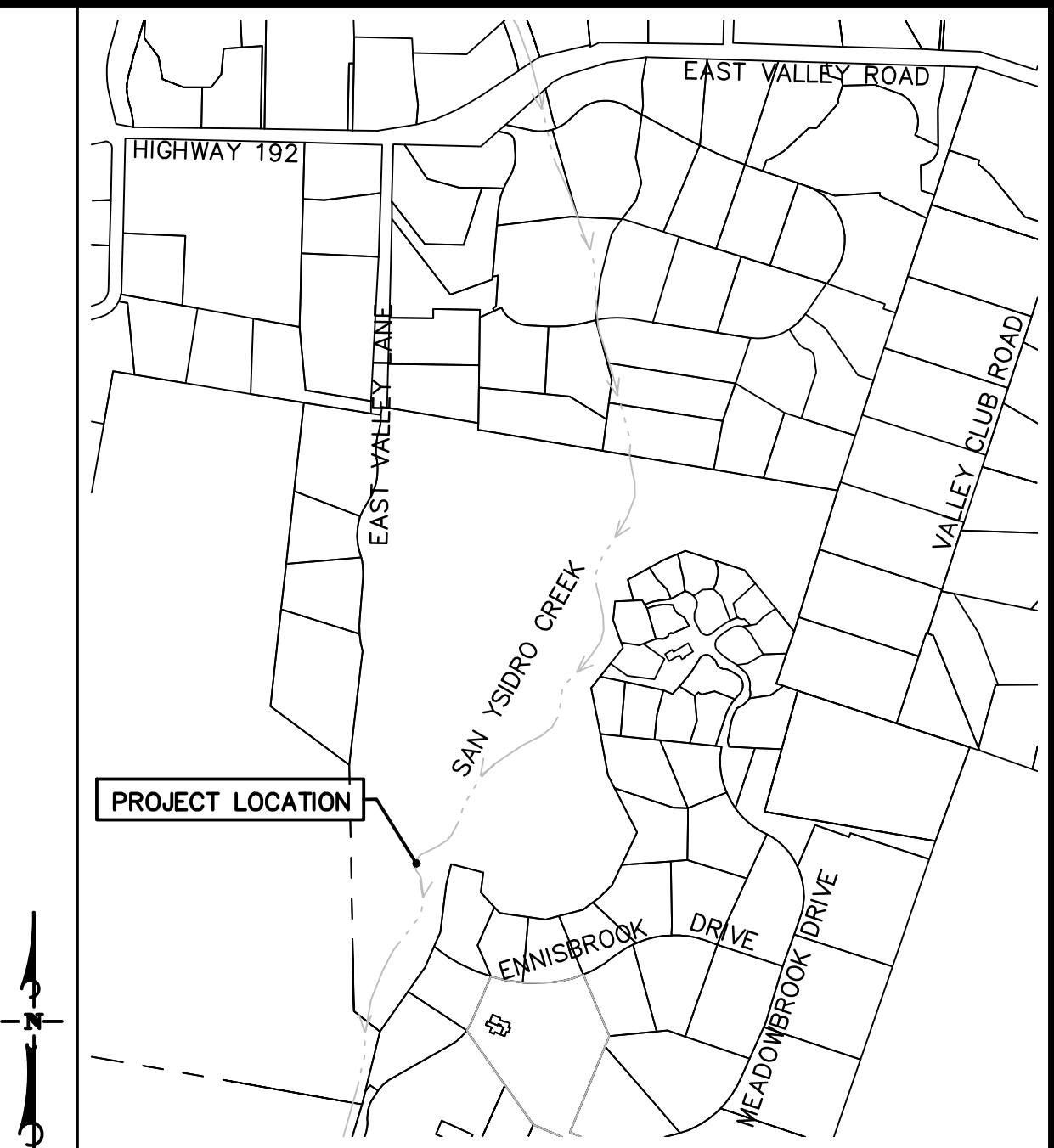
- MAPPING**
TOPOGRAPHIC MAPPING WAS COMPILED AT A SCALE OF 1"=20', WITH A 1 FOOT CONTOUR INTERVAL, FROM DATA COLLECTED IN A FIELD SURVEY PERFORMED USING CONVENTIONAL EQUIPMENT AND PROCEDURES IN SEPTEMBER 2023, AT THE REQUEST OF MONTECITO SANITATION DISTRICT.
- BASIS OF BEARINGS AND COORDINATES**
THE BEARINGS AND DISTANCES SHOWN ON THIS MAP ARE BASED ON THE CALIFORNIA COORDINATE SYSTEM OF 1983 (CCS83), NAD83(2011), ZONE 5, EPOCH 2017.50, DEFINED LOCALLY BY STATIC GNSS AND CONVENTIONAL FIELD TIES TO THE MONTECITO HIGH PRECISION GEODETIC CONTROL NETWORK AS SHOWN ON THE MAP FILED IN BOOK 212, PAGE 48 THROUGH 52 OF RECORD OF SURVEYS. THIS SURVEY TIED TO STATIONS 12 "ELBOW" (PASSIVE), 19 "SINALOA" (PASSIVE), AND 21 "ISABEL" (PASSIVE) OF SAID NETWORK.

THE SITE COMBINATION FACTOR IS 0.99993886 AND THE SITE MAPPING ANGLE IS -0°55'48.27", BOTH CALCULATED AT STATION 19 "SINALOA", HAVING AN ELEVATION OF 94.472 US FEET. TO OBTAIN GROUND LEVEL DISTANCES, MULTIPLY GRID DISTANCES BY 1.00006114, WHICH IS THE INVERSE OF THE PROJECT COMBINATION FACTOR. TO OBTAIN TRUE NORTH AZIMUTHS, SUBTRACT 0°55'48.27" FROM THE GRID AZIMUTHS.
- ELEVATIONS**
ELEVATIONS SHOWN HEREON ARE EXPRESSED IN U.S. SURVEY FEET AND ARE REFERENCED TO THE NORTH AMERICAN VERTICAL DATUM OF 1988 (NAVD88) AS DEFINED LOCALLY BY THE MONTECITO HIGH PRECISION GEODETIC NETWORK AS SHOWN ON THE MAP FILED IN BOOK 212, PAGE 48 THROUGH 52 OF RECORD OF SURVEYS. THIS SURVEY TIED TO STATION 19 "SINALOA" OF SAID MAP. ELEVATION=94.427 FEET.
- UTILITIES**
SURFACE UTILITY FEATURES SHOWN HEREON WERE LOCATED AS A PART OF THE FIELD SURVEY PERFORMED BY STANTEC BASED ON VISIBILITY ON THE DATE OF SURVEY. NO RESEARCH OR MAPPING OF SUBSURFACE UTILITIES HAS BEEN PERFORMED.
- BOUNDARY**
THE BOUNDARY AND EASEMENT INFORMATION SHOWN ON THESE DRAWINGS WAS COMPILED FROM COUNTY APN GIS DATABASE AND SEWER EASEMENT RECORDS. THIS INFORMATION IS FOR VISUAL PURPOSES ONLY. NO BOUNDARY SURVEY WAS CONDUCTED.

CONTROL POINT LISTINGS				
POINT	NORTHING	EASTING	ELEVATION	DESCRIPTION
3	1983865.12	6072633.28	170.51	CP 1/2" IP AND STANTEC CONTROL PLUG
4	1983753.03	6072711.65	159.01	CP 1/2" IP AND STANTEC CONTROL PLUG
9	1983835.92	6072790.99	151.34	CP SCRIBED X IN BOULDER
12	1987838.45	6069719.89	304.29	HPGN "ELBOW" (PASSIVE)
19	1982518.39	6069660.04	94.47	HPGN "SINALOA" (PASSIVE)
21	1981104.93	6067793.84	96.54	HPGN "ISABEL" (PASSIVE)

PROTECTIVE MEASURES OF DISTRICT FACILITIES (JANUARY 2023 STORM)- PROJECT 3

MONTECITO SANITARY DISTRICT



SHEET INDEX

- TITLE SHEET
- NOTES SHEET
- PLAN AND SECTION VIEW
- EROSION CONTROL PLAN AND DETAILS



Know what's below. Call before you dig.

SURVEY INFORMATION:
CALIFORNIA COORDINATE SYSTEM OF 1983 (CCS83), NAD83(2011), ZONE 5, EPOCH 2017.50, STATIC GNSS AND MONTECITO HIGH PRECISION GEODETIC CONTROL NETWORK AS SHOWN ON THE MAP FILED IN BOOK 212, PAGE 48 THROUGH 52 OF RECORD OF SURVEYS.
NORTH AMERICAN VERTICAL DATUM OF 1988 (NAVD88) MONTECITO HIGH PRECISION GEODETIC NETWORK AS SHOWN ON THE MAP FILED IN BOOK 212, PAGE 48 THROUGH 52 OF RECORD OF SURVEYS.

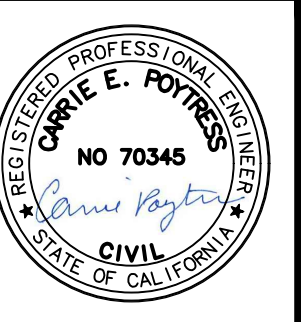
DESIGN JTZ
DRAWN GMK
CHECKED CEP
BID NO. 2024-01
PAGE
ATLAS

SCALE:
VERT. _____
HOR. _____

WARNING
0 1/2 1
IF THIS BAR DOES NOT MEASURE 1", THEN DRAWING IS NOT TO SCALE

NO.	DATE	REVISION BLOCK	APPD.

PREPARED BY:
Stantec
200 E. Carrillo Street, Suite 101, Santa Barbara, CA 93101
Phone: (805) 963-9532
CARRIE E. POYTRESS 70,345 EXP. 09/2024
PROJECT ENGINEER R.C.E. DATE



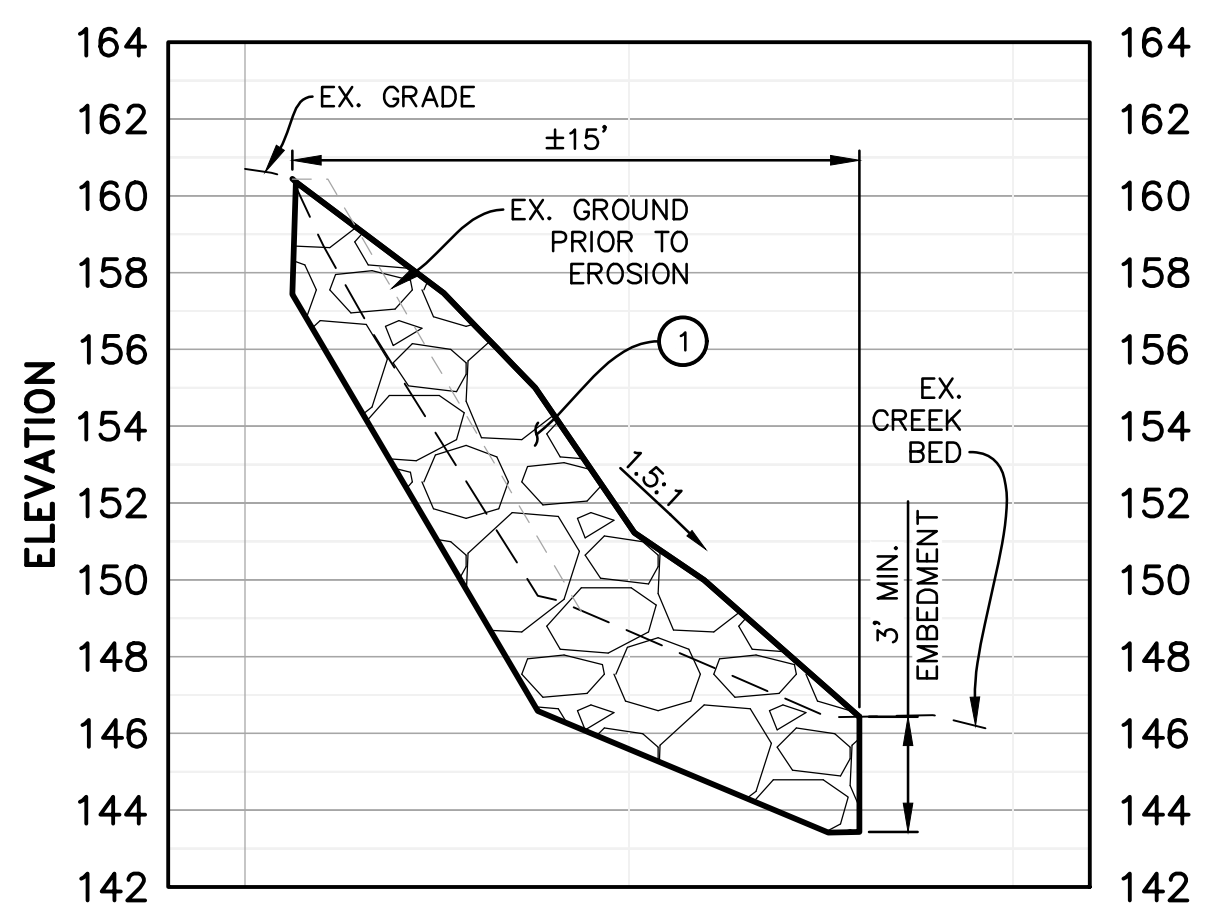
TITLE SHEET
PROJECT 3
SAN YSIDRO CREEK
MSD PROTECTIVE MEASURES
MONTECITO, CA

MSD PROJECT NO. 2024-01
SHEET 1 OF 4
DWG. NO. EXT. A-52-18

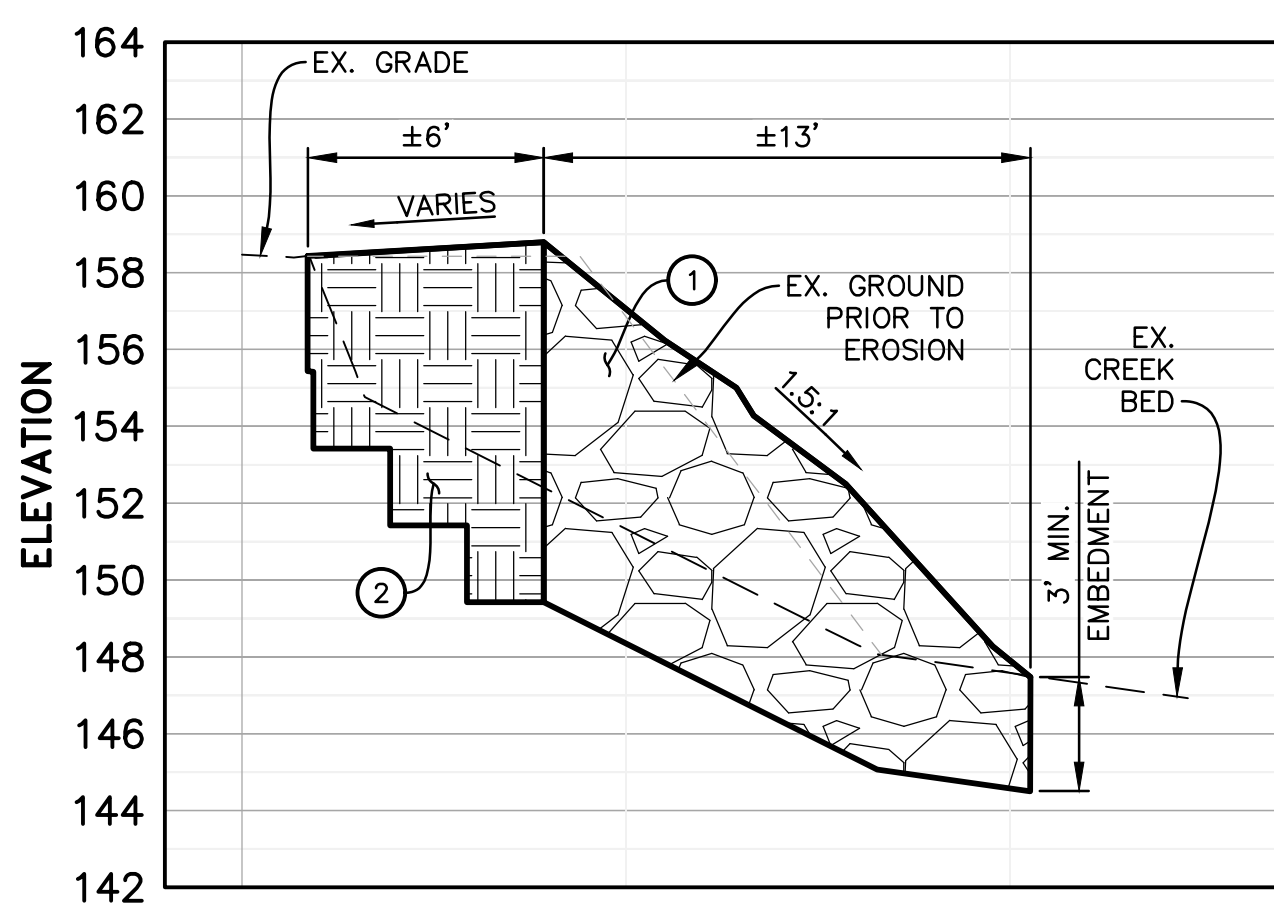
DESIGN CEP CHECKED JTZ PLOT DATE: 6/4/2024 12:28:23 PM PLOT BY: Poytress, Carrie

ISSUE FOR CONSTRUCTION

DRAWING: u:\194032314\engineering\drawing\final_eng_project_3.dwg



SECTION A - A
SCALE: HORIZ. 1" = 10' VERT. 1" = 10'



SECTION B - B
SCALE: HORIZ. 1" = 10' VERT. 1" = 10'

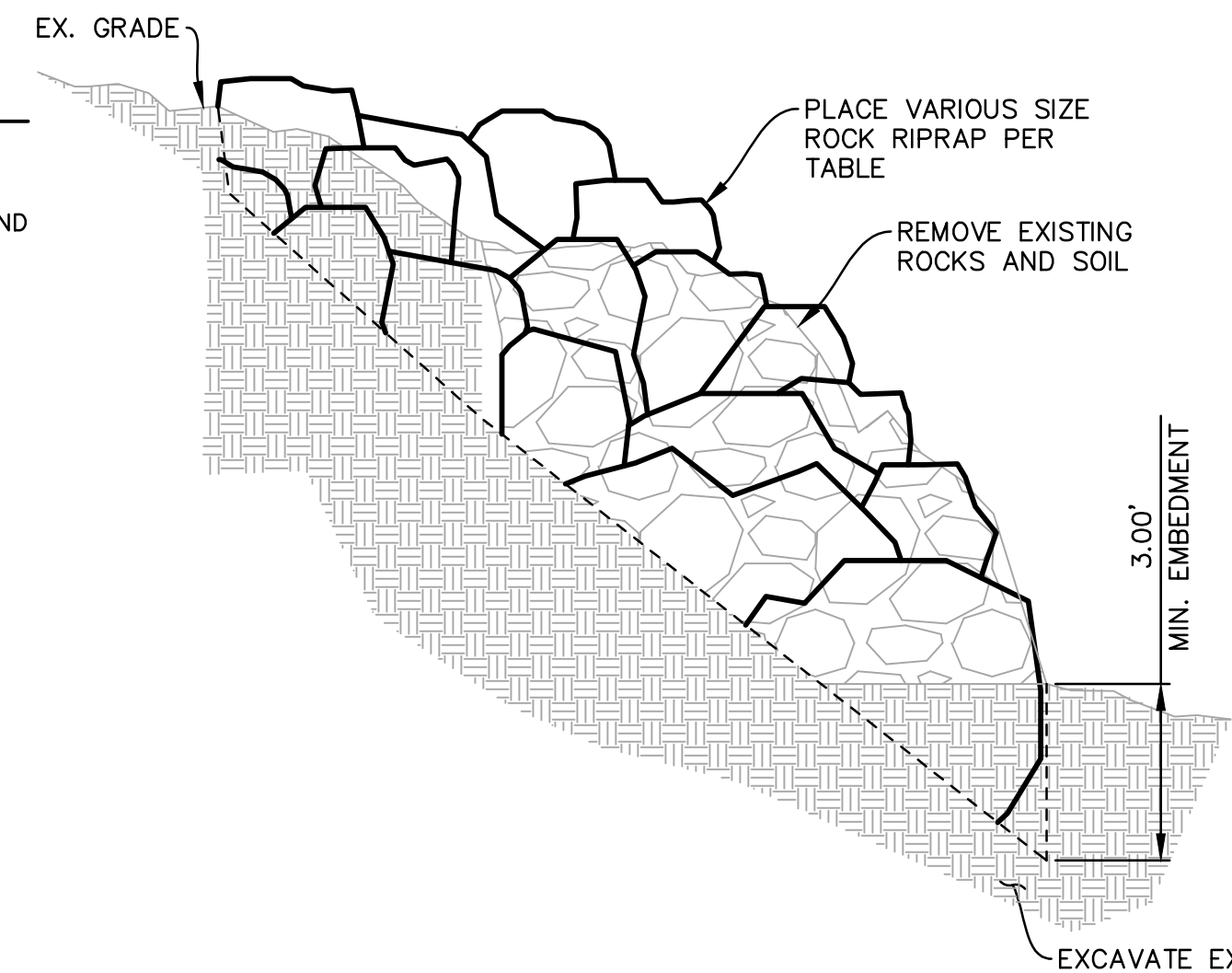
CONSTRUCTION NOTES

- ① REMOVE EXISTING ROCK AND SOIL AND PROVIDE VARIOUS SIZE ROCK RIP-RAP EMBEDDED A MINIMUM OF 3-FT INTO NATIVE SOIL PER DETAIL A, THIS SHEET.
- ② REMOVE EXISTING ROCK AND SOIL TO MINIMUM 3-FT BELOW EXISTING GRADE AND PROVIDE NATIVE FILL COMPACTED TO MINIMUM 90% RELATIVE COMPACTION.

CUT AREA TABLE		
ITEM	AREA (SF)	VOLUME (CY)
CUT 1811		180

SOIL FILL AREA TABLE		
ITEM	AREA (SF)	VOLUME (CY)
FILL 318		79

ROCK FILL AREA TABLE		
ITEM	AREA (SF)	VOLUME (CY)
FILL 1499		361

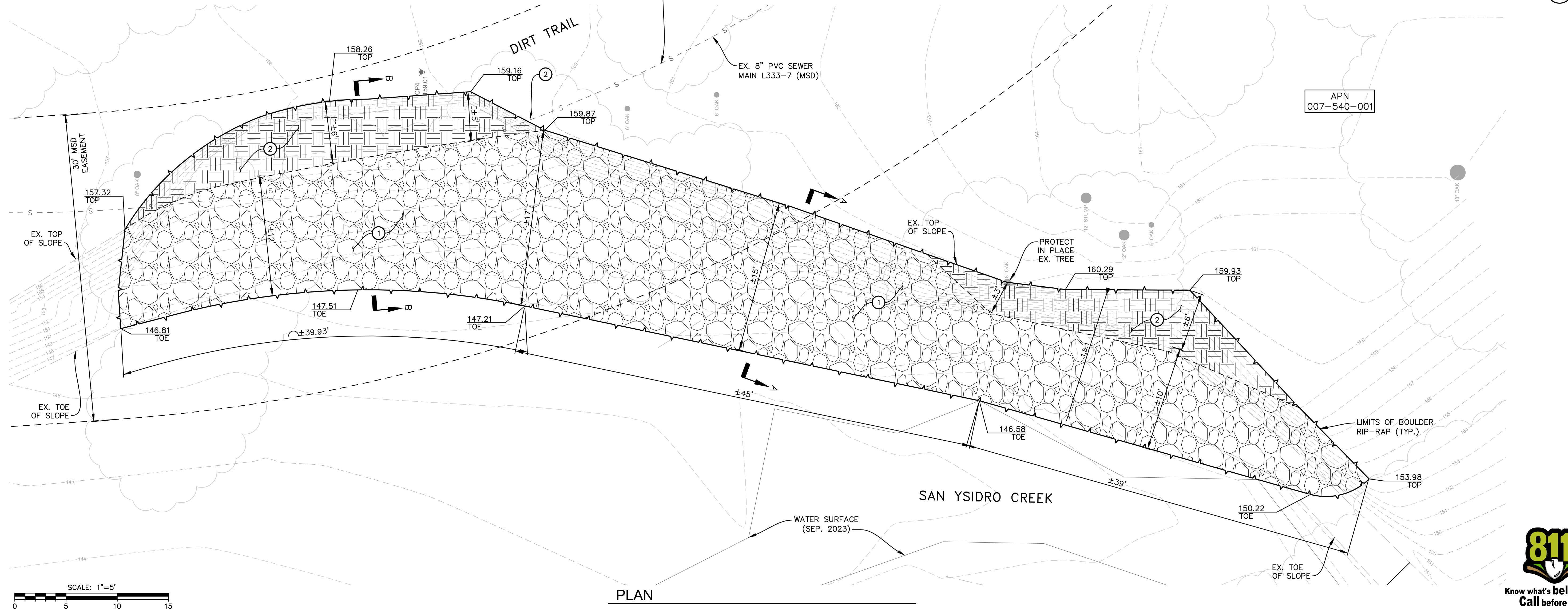


ROCK RIPRAP DETAIL
SCALE: N.T.S.

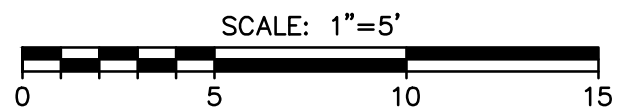
Description	Value	Units
Class Name	Class VIII	
Class Order	8	
D15	22	in
D50	31.5	in
D85	42.5	in
D100	60	in
Tminimum	60	in

NOTE: ROCK RIP-RAP SHALL NOT BE SANDSTONE.

CONTRACTOR TO PROTECT PIPE IN PLACE AND TO SUBMIT EMERGENCY BYPASS PLAN PRIOR TO CONSTRUCTION TO BE APPROVED BY MSD AND USED IN THE EVENT THAT PIPE IS BROKEN DURING CONSTRUCTION, SEE SEWER BYPASS NOTES ON SHEET 2.



PLAN



DESIGN: CEP CHECKED: JTZ PLOT DATE: 6/5/2024 3:02:06 PM PLOT BY: Poytress, Carrie

SURVEY INFORMATION:
CALIFORNIA COORDINATE SYSTEM OF 1983 (CCS83), NAD83(2011), ZONE 5, EPOCH 2017.50, STATIC GNSS AND MONTECITO HIGH PRECISION GEODETIC CONTROL NETWORK AS SHOWN ON THE MAP FILED IN BOOK 212, PAGE 48 THROUGH 52 OF RECORD OF SURVEYS.
NORTH AMERICAN VERTICAL DATUM OF 1988 (NAVD88), MONTECITO HIGH PRECISION GEODETIC NETWORK AS SHOWN ON THE MAP FILED IN BOOK 212, PAGE 48 THROUGH 52 OF RECORD OF SURVEYS.

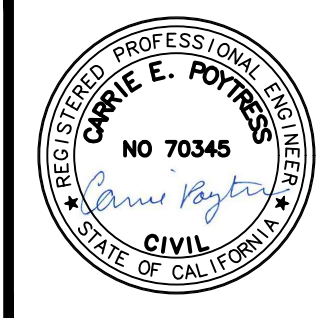
DESIGN: JTZ
DRAWN: GMK
CHECKED: CEP
BID NO.: 2024-01
PAGE: _____
ATLAS: _____

SCALE:
VERT. _____
HOR. _____

WARNING
0 1/2 1
IF THIS BAR DOES NOT MEASURE 1", THEN DRAWING IS NOT TO SCALE

NO.	DATE	REVISION BLOCK	APPD.

PREPARED BY:
Stantec
200 E. Carrillo Street, Suite 101, Santa Barbara, CA 93101
Phone: (805) 963-9532
CARRIE E. POYTRESS 70,345 EXP. 09/2024
PROJECT ENGINEER R.C.E. DATE



**PLAN AND SECTION VIEW
PROJECT 3
SAN YSIDRO CREEK
MSD PROTECTIVE MEASURES**
MONTECITO, CA

MSD PROJECT NO. 2024-01
SHEET 3 OF 4
DWG. NO. EXT. A-52-18



ISSUE FOR CONSTRUCTION

LEGEND

- SURVEY IRON PIN FOUND
- ☀ EXISTING TREE
- CD= EXISTING CLEAN OUT
- ◇ FH EXISTING FIRE HYDRANT
- ⊗ WV EXISTING WATER VALVE
- ⊗ WM EXISTING WATER METER
- ⊗ GM EXISTING GAS METER
- ⊗ UP EXISTING UTILITY POLE
- MB EXISTING MAILBOX EXISTING
- SGV EXISTING SIGN
- SM EXISTING SEWER MANHOLE
- PROPOSED ELEVATION LABEL
- EXISTING ELEVATION LABEL
- EXISTING RIGHT OF WAY
- 310--- EXISTING CONTOUR (MAJOR)
- EXISTING CONTOUR (MINOR)
- EXISTING STONE CURB
- ⊗ EXISTING CHAINLINK FENCE
- == EXISTING ROAD (PAVED)
- S - - - - - EXISTING SEWER MAIN
- W - - - - - EXISTING WATERLINE
- G - - - - - EXISTING NATURAL GAS LINE
- OHW - - - - - EXISTING OVERHEAD WIRE
- S - - - - - PROPOSED SEWER MAIN

LIST OF ABBREVIATIONS

- | | |
|---------------------------|---------------------------------|
| AC ASPHALT CONCRETE | MSD MONTECITO SANITARY DISTRICT |
| AB AGGREGATE BASE | MTR METER |
| BW BACK OF WALK | N NORTH |
| BLDG BUILDING CORNER | NE NORTH EAST |
| C CENTER LINE | NW NORTH WEST |
| CF CURB FACE | P PROPERTY LINE |
| CO CLEANOUT | PP POWER POLE |
| CONC CONCRETE | PVMT PAVEMENT |
| CP CONTROL POINT | RD ROOF DRAIN |
| CTV CABLE TV | S SEWER |
| DW DRIVEWAY | S SOUTH |
| E EAST | SE SOUTH EAST |
| E ELECTRICAL | SW SOUTH WEST |
| EP EDGE OF PAVEMENT | SD STORM DRAIN |
| FD CP FOUND CONTROL POINT | SL STREET LIGHT |
| FF FINISH FLOOR | STA STATION |
| FG FINISH GRADE | T TELEPHONE |
| FH FIRE HYDRANT | TC TOP OF CURB |
| FL FLOW LINE | TCN TOP OF CONCRETE |
| FLOW FACE OF WALL | TG TOP OF GRATE |
| FS FINISH SURFACE | TP TOP OF PAVEMENT |
| G GAS | TW TOP OF WALL |
| GB GRADE BREAK | TV CABLE TV |
| GM GAS METER | TYP TYPICAL |
| GR GRADE | W WEST |
| HYD HYDRANT | WM WATER METER |
| INV INVERSE | WTR WATER |
| LRG LARGE | WV WATER VALVE |
| MH MANHOLE | LT. LEFT OF CENTERLINE |
| MON MONUMENT | RT. RIGHT OF CENTERLINE |

SURVEY NOTES

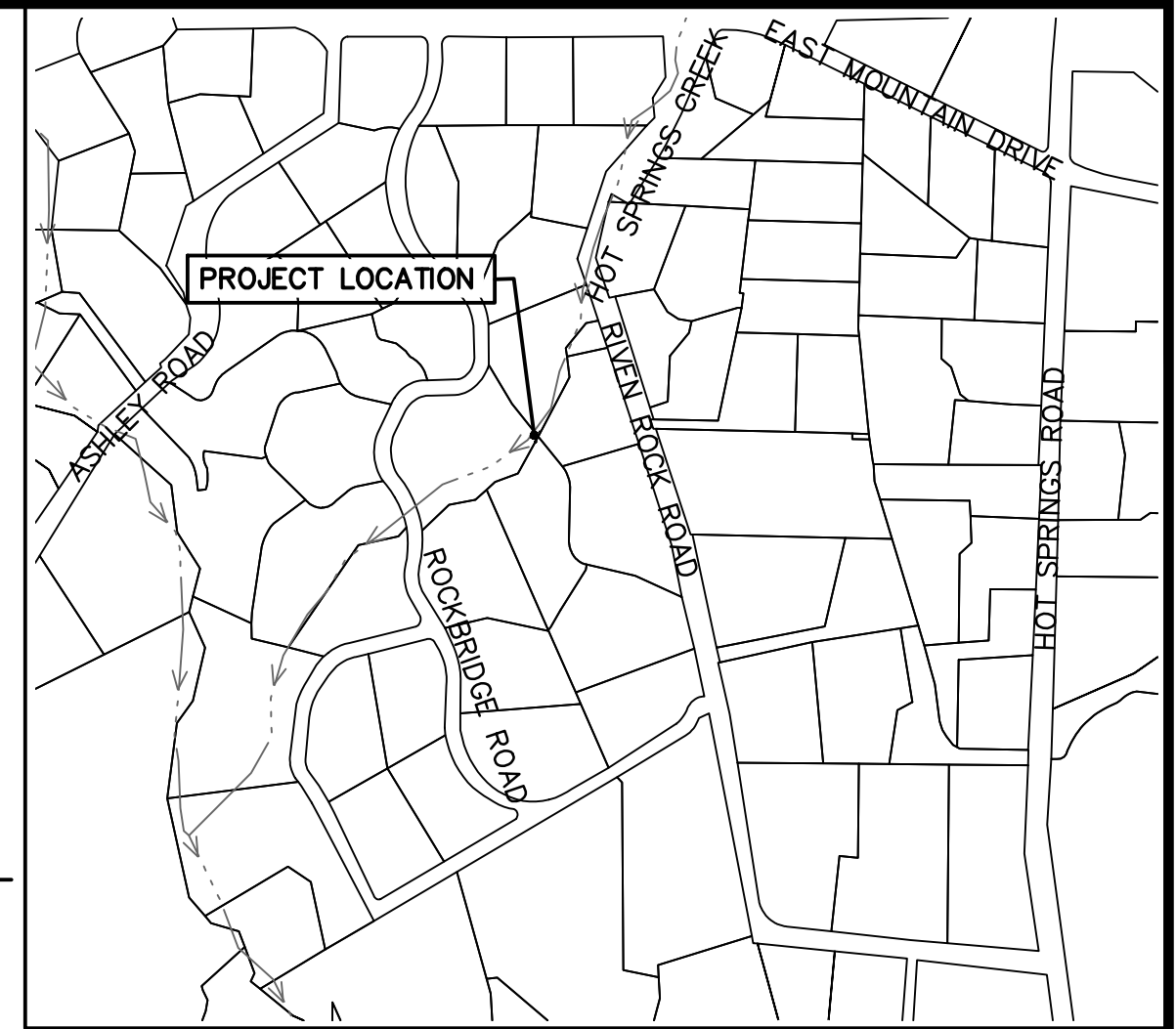
- MAPPING**
TOPOGRAPHIC MAPPING WAS COMPILED AT A SCALE OF 1"=20', WITH A 1 FOOT CONTOUR INTERVAL, FROM DATA COLLECTED IN A FIELD SURVEY PERFORMED USING CONVENTIONAL EQUIPMENT AND PROCEDURES IN SEPTEMBER 2023, AT THE REQUEST OF MONTECITO SANITATION DISTRICT.
- BASIS OF BEARINGS AND COORDINATES**
THE BEARINGS AND DISTANCES SHOWN ON THIS MAP ARE BASED ON THE CALIFORNIA COORDINATE SYSTEM OF 1983 (CCS83), NAD83(2011), ZONE 5, EPOCH 2017.50, DEFINED LOCALLY BY STATIC GNSS AND CONVENTIONAL FIELD TIES TO THE MONTECITO HIGH PRECISION GEODETIC CONTROL NETWORK AS SHOWN ON THE MAP FILED IN BOOK 212, PAGE 48 THROUGH 52 OF RECORD OF SURVEYS. THIS SURVEY TIED TO STATIONS 12 "ELBOW" (PASSIVE), 19 "SINALOA" (PASSIVE), AND 21 "ISABEL" (PASSIVE) OF SAID NETWORK.

THE SITE COMBINATION FACTOR IS 0.99993886 AND THE SITE MAPPING ANGLE IS -0°55'48.27", BOTH CALCULATED AT STATION 19 "SINALOA", HAVING AN ELEVATION OF 94.472 US FEET. TO OBTAIN GROUND LEVEL DISTANCES, MULTIPLY GRID DISTANCES BY 1.00006114, WHICH IS THE INVERSE OF THE PROJECT COMBINATION FACTOR. TO OBTAIN TRUE NORTH AZIMUTHS, SUBTRACT 0°55'48.27" FROM THE GRID AZIMUTHS.
- ELEVATIONS**
ELEVATIONS SHOWN HEREON ARE EXPRESSED IN U.S. SURVEY FEET AND ARE REFERENCED TO THE NORTH AMERICAN VERTICAL DATUM OF 1988 (NAVD88) AS DEFINED LOCALLY BY THE MONTECITO HIGH PRECISION GEODETIC NETWORK AS SHOWN ON THE MAP FILED IN BOOK 212, PAGE 48 THROUGH 52 OF RECORD OF SURVEYS. THIS SURVEY TIED TO STATION 19 "SINALOA" OF SAID MAP. ELEVATION=94.427 FEET.
- UTILITIES**
SURFACE UTILITY FEATURES SHOWN HEREON WERE LOCATED AS A PART OF THE FIELD SURVEY PERFORMED BY STANTEC BASED ON VISIBILITY ON THE DATE OF SURVEY. NO RESEARCH OR MAPPING OF SUBSURFACE UTILITIES HAS BEEN PERFORMED.
- BOUNDARY**
THE BOUNDARY AND EASEMENT INFORMATION SHOWN ON THESE DRAWINGS WAS COMPILED FROM COUNTY APN GIS DATABASE AND SEWER EASEMENT RECORDS. THIS INFORMATION IS FOR VISUAL PURPOSES ONLY. NO BOUNDARY SURVEY WAS CONDUCTED.

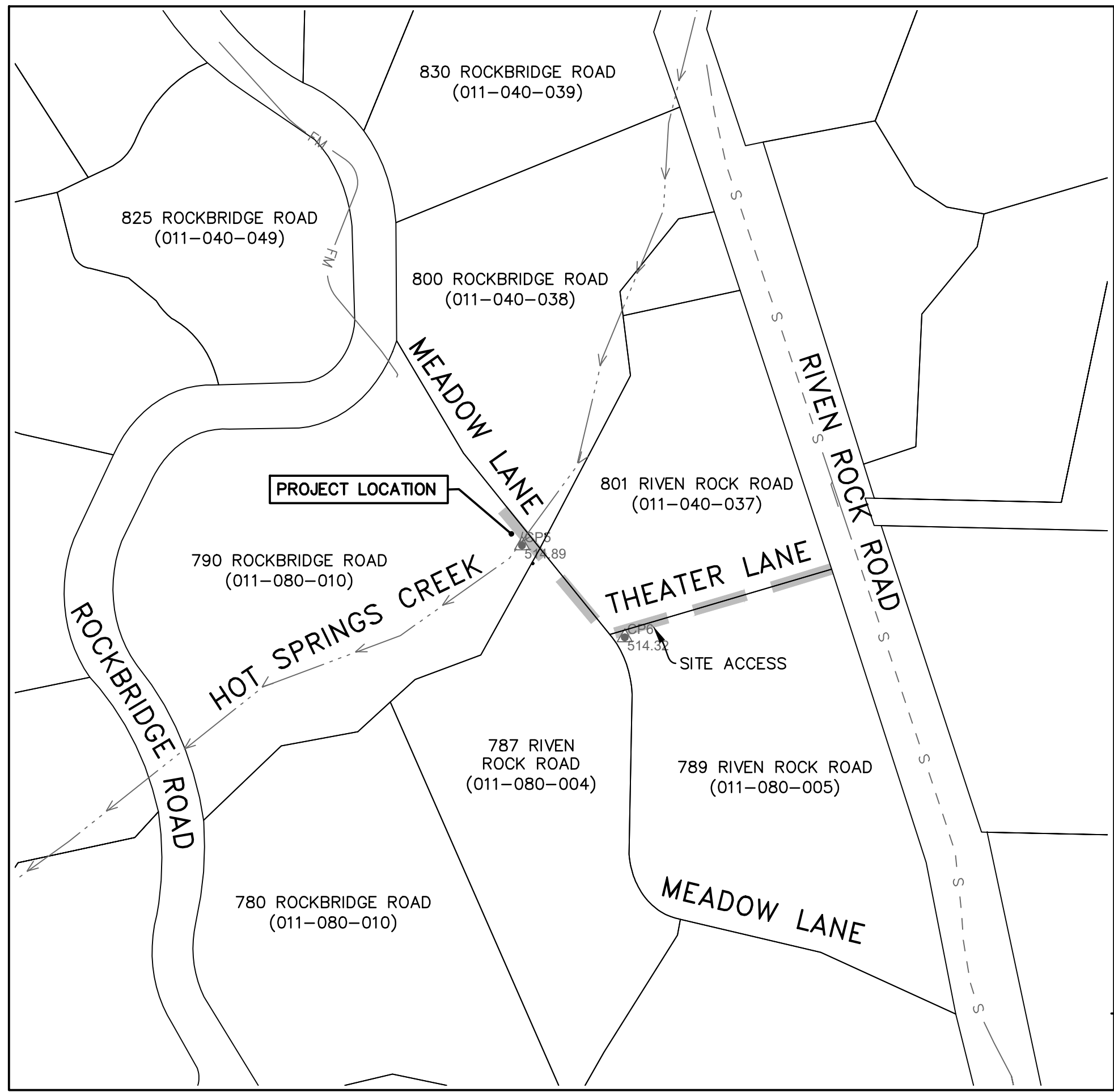
CONTROL POINT LISTINGS				
POINT	NORTHING	EASTING	ELEVATION	DESCRIPTION
5	1988792.78	6065002.41	514.89	CP MAG AND STANTEC CONTROL WASHER
6	1988708.27	6065096.76	514.32	CP MAG AND STANTEC CONTROL WASHER
12	1987838.45	6069719.89	304.29	HPGN "ELBOW" (PASSIVE)
19	1982518.39	6069660.04	94.47	HPGN "SINALOA" (PASSIVE)
21	1981104.93	6067793.84	96.54	HPGN "ISABEL" (PASSIVE)

PROTECTIVE MEASURES OF DISTRICT FACILITIES (JANUARY 2023 STORM)- PROJECT 4

MONTECITO SANITARY DISTRICT



VICINITY MAP
1" = 500'



ACCESS MAP
1" = 100'

SHEET INDEX

- 1 TITLE SHEET
- 2 NOTES SHEET
- 3 PLAN AND SECTION VIEW
- 4 EROSION CONTROL PLAN AND DETAILS



SURVEY INFORMATION:
CALIFORNIA COORDINATE SYSTEM OF 1983 (CCS83), NAD83(2011), ZONE 5, EPOCH 2017.50, STATIC GNSS AND MONTECITO HIGH PRECISION GEODETIC CONTROL NETWORK AS SHOWN ON THE MAP FILED IN BOOK 212, PAGE 48 THROUGH 52 OF RECORD OF SURVEYS.

NORTH AMERICAN VERTICAL DATUM OF 1988 (NAVD88) MONTECITO HIGH PRECISION GEODETIC CONTROL NETWORK AS SHOWN ON THE MAP FILED IN BOOK 212, PAGE 48 THROUGH 52 OF RECORD OF SURVEYS.

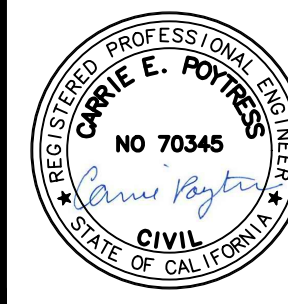
DESIGN JTZ
DRAWN GMK
CHECKED CEP
BID NO. 2024-01
PAGE _____
ATLAS _____

SCALE:
VERT. _____
HOR. _____

WARNING
0 1/2 1
IF THIS BAR DOES NOT MEASURE 1", THEN DRAWING IS NOT TO SCALE

NO.	DATE	REVISION BLOCK	APPD.

PREPARED BY:
Stantec
200 E. Carrillo Street, Suite 101, Santa Barbara, CA 93101
Phone: (805) 963-9532
CARRIE E. POYTRESS 70,345 EXP. 09/2024
PROJECT ENGINEER R.C.E. DATE



TITLE SHEET
PROJECT 4
HOT SPRINGS CREEK
MSD PROTECTIVE MEASURES
MONTECITO, CA

MSD PROJECT NO.
2024-01
SHEET
1 OF 4
DWG. NO.
EXT. A-78-3

DESIGN: CEP CHECKED: JTZ PLOT DATE: 6/4/2024 12:30:01 PM PLOT BY: Poytress, Carrie

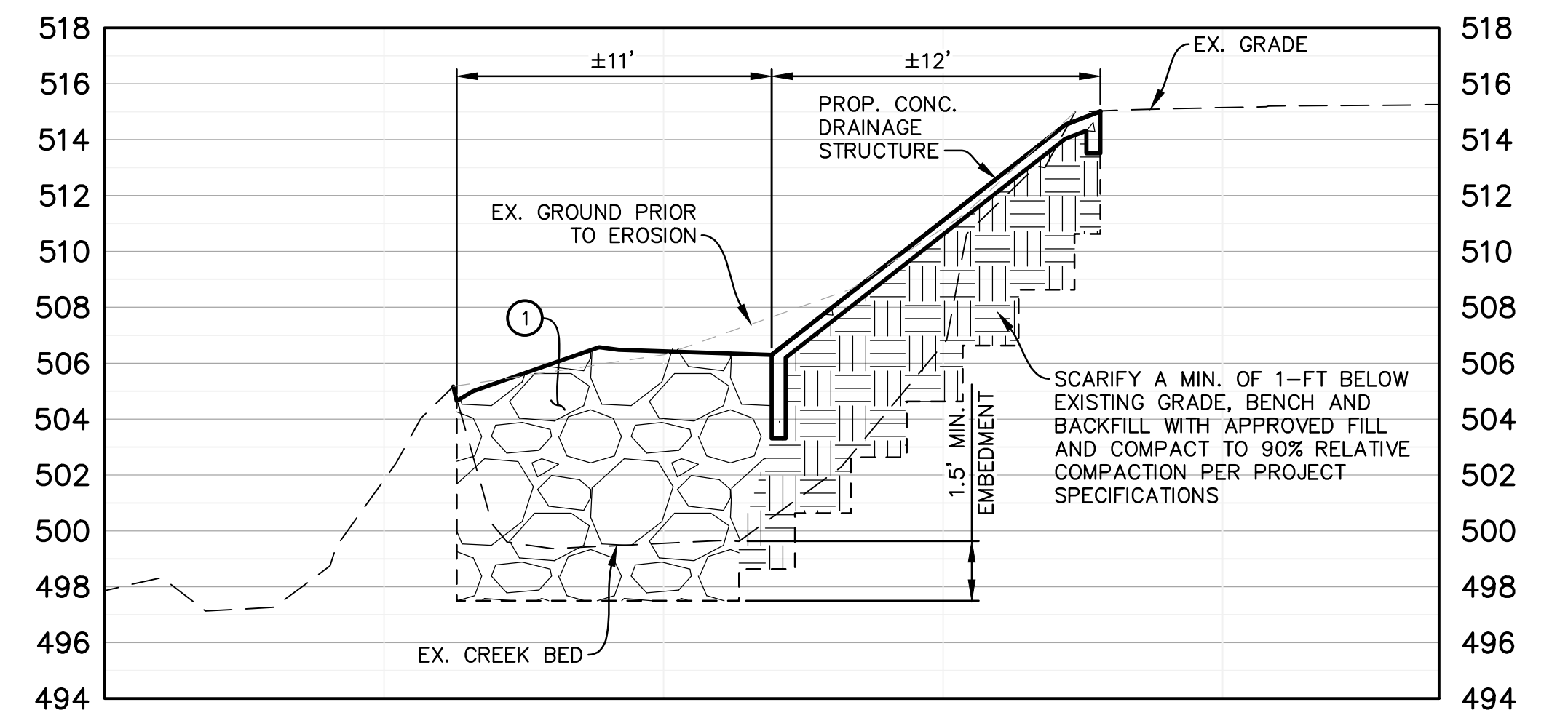
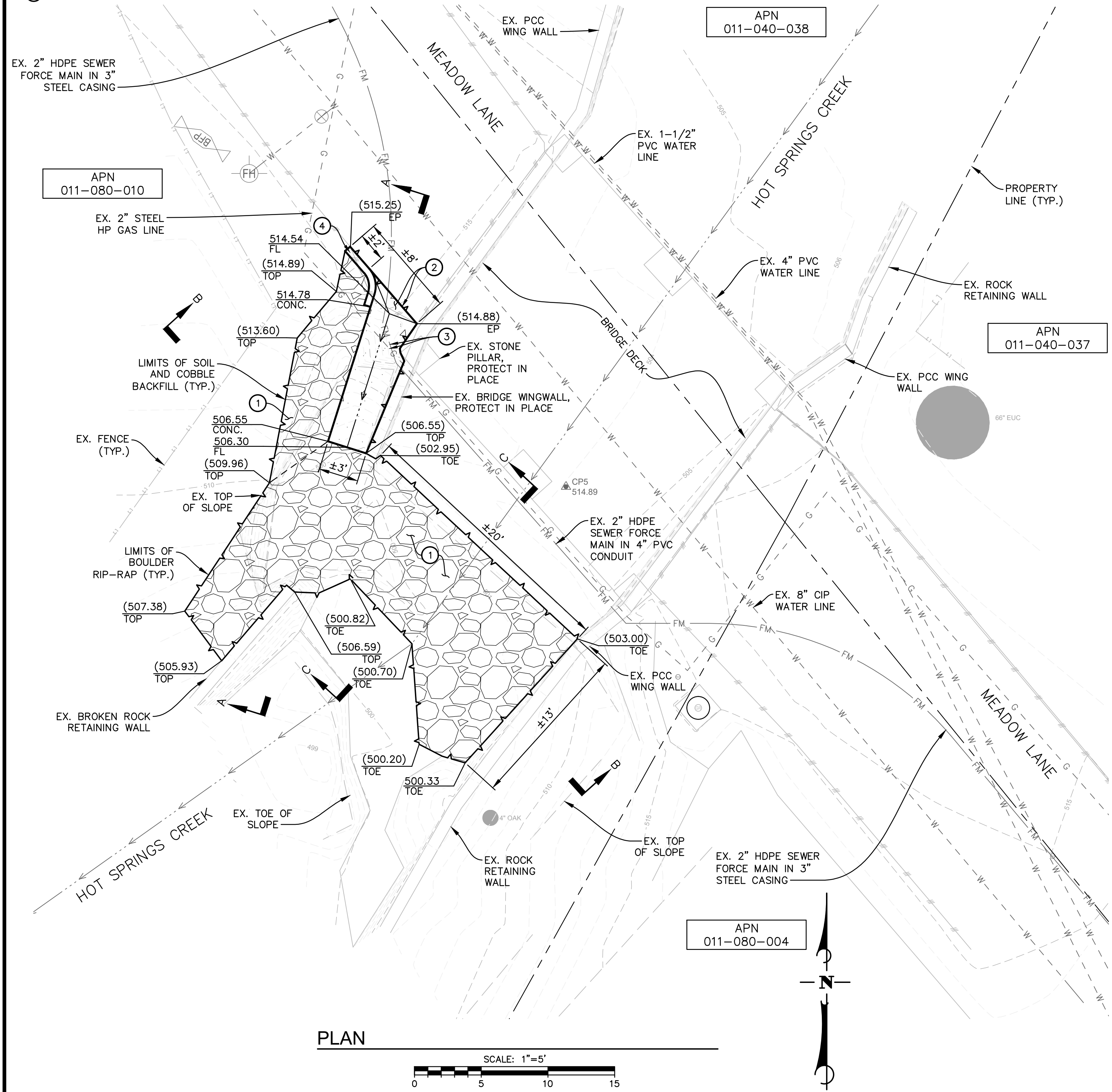
ISSUE FOR CONSTRUCTION

DRAWING: u:\194032314\engineering\drawing\final_eng_project_4.dwg

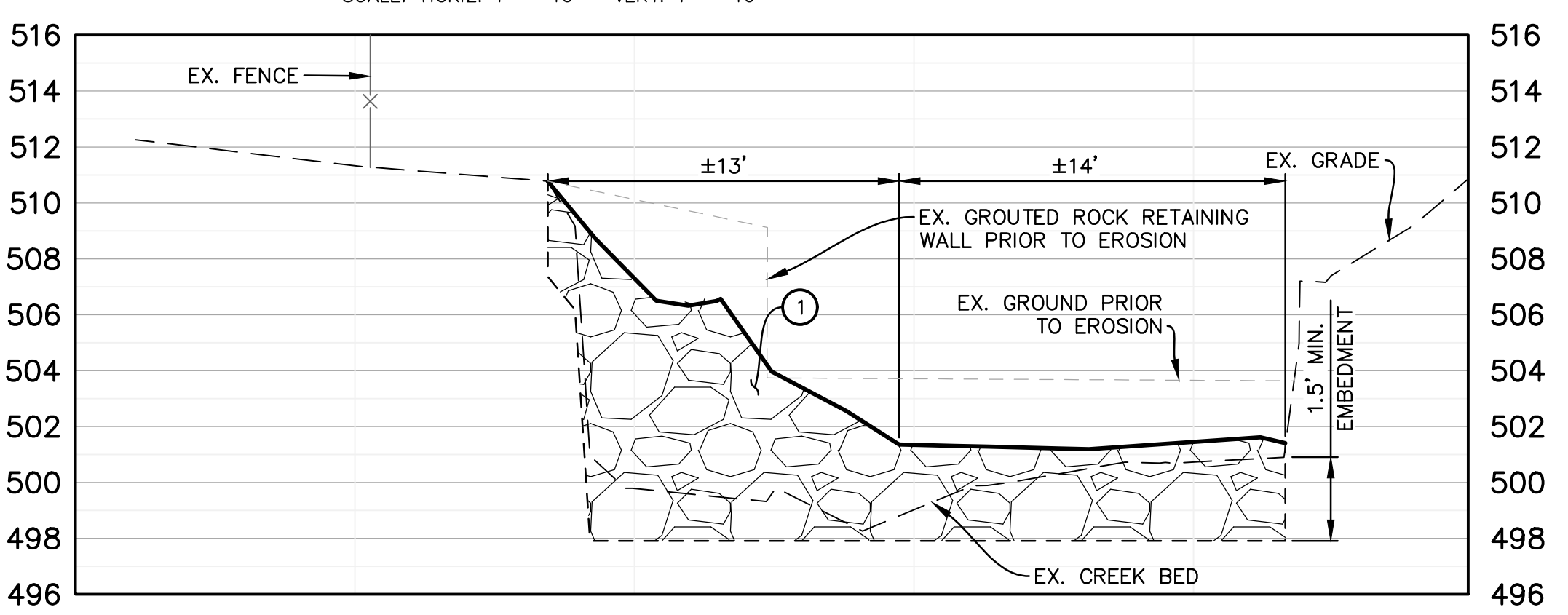
CONSTRUCTION NOTES

- REMOVE EXISTING ROCK/SOIL AND PROVIDE VARIOUS SIZE ROCK RIP-RAP EMBEDDED A MINIMUM OF 1.5-FT INTO NATIVE SOIL PER ROCK RIPRAP TABLE, THIS SHEET.
- SAWCUT EXISTING AC PAVEMENT AND CONSTRUCT CONCRETE DRAINAGE STRUCTURE PER DETAIL A, THIS SHEET.
- PROTECT IN PLACE AND WRAP EXISTING SEWER FORCE MAIN AND EXISTING UTILITIES IN POLYETHYLENE TAPE AND POUR CONCRETE AROUND UTILITIES AT BELOW TO ABOVE GROUND TRANSITION.
- CONSTRUCT SANDSTONE CURB PER DETAIL A, THIS SHEET.

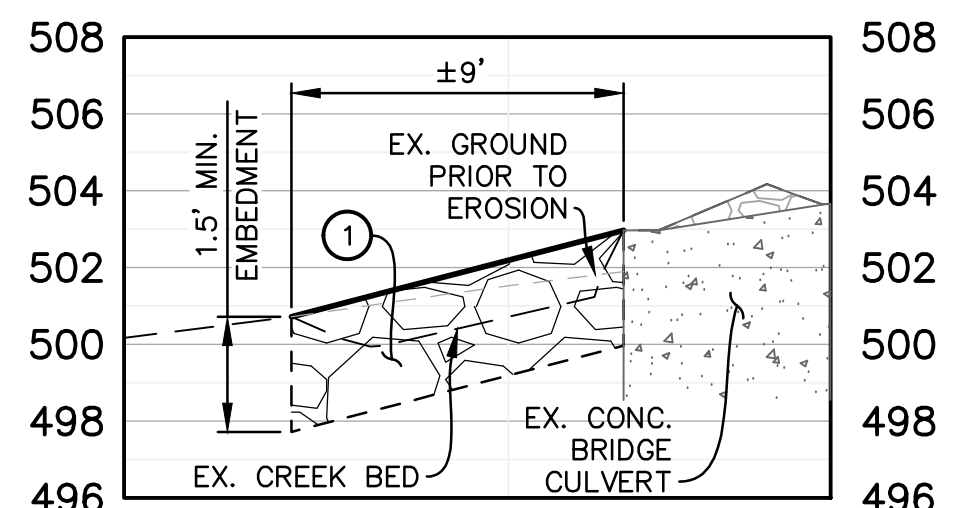
CUT AREA TABLE			SOIL FILL AREA TABLE		
ITEM	AREA (SF)	VOLUME (CY)	ITEM	AREA (SF)	VOLUME (CY)
CUT	394	29	FILL	42	9
ROCK FILL AREA TABLE			CONCRETE VOLUME		
ITEM	AREA (SF)	VOLUME (CY)	ITEM	AREA (SF)	VOLUME (CY)
FILL	352	55	FILL	42	1



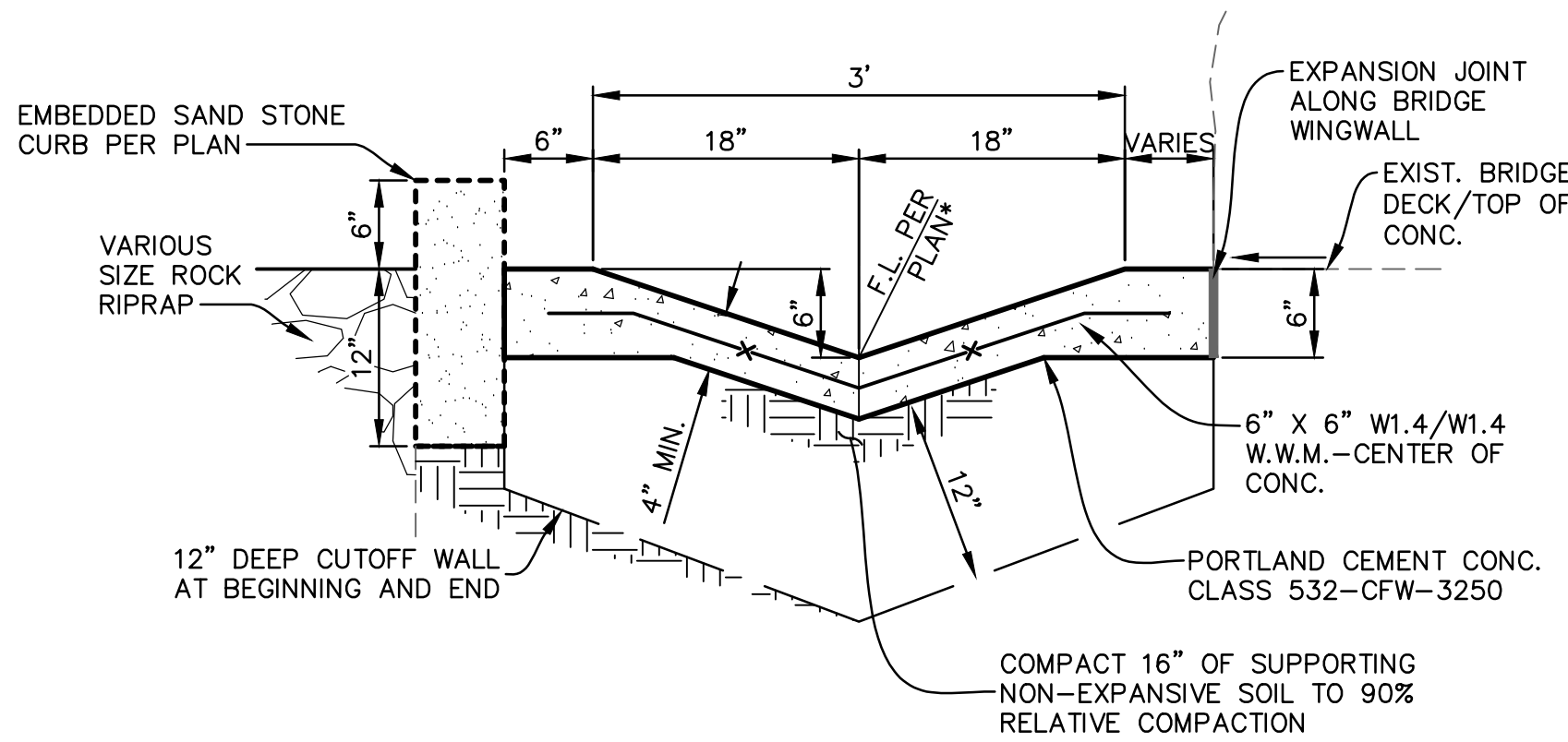
SECTION A - A
SCALE: HORIZ. 1" = 10' VERT. 1" = 10'



SECTION B - B
SCALE: HORIZ. 1" = 10' VERT. 1" = 10'



SECTION C - C
SCALE: HORIZ. 1" = 10' VERT. 1" = 10'



CONC. DRAINAGE STRUCTURE (A)
SCALE: N.T.S.

Description	Value	Units
Class Name	Class V	
Class Order	8	
D15	13	in
D50	18.5	in
D85	25.5	in
D100	36	in
Tminimum	36	in

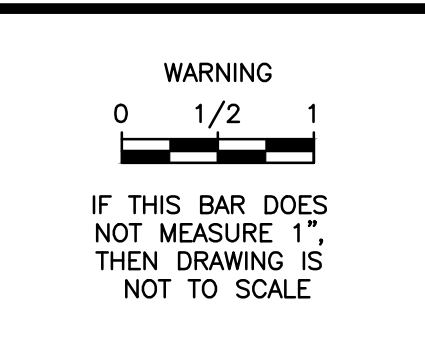
NOTE: ROCK RIP-RAP SHALL MEET PROJECT SPECIFICATIONS.

ROCK RIPRAP TABLE
SCALE: N.T.S.

SURVEY INFORMATION:
CALIFORNIA COORDINATE SYSTEM OF 1983 (CCS83), NAD83(2011), ZONE 5, EPOCH 2017.50, STATIC GNSS AND MONTECITO HIGH PRECISION GEODETIC CONTROL NETWORK AS SHOWN ON THE MAP FILED IN BOOK 212, PAGE 48 THROUGH 52 OF RECORD OF SURVEYS.
NORTH AMERICAN VERTICAL DATUM OF 1988 (NAVD88) MONTECITO HIGH PRECISION GEODETIC NETWORK AS SHOWN ON THE MAP FILED IN BOOK 212, PAGE 48 THROUGH 52 OF RECORD OF SURVEYS.

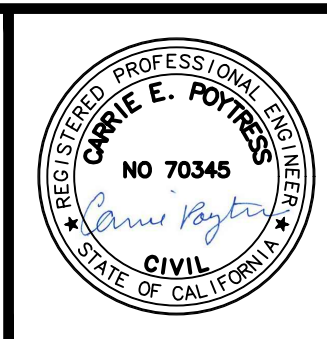
DESIGN JTZ
DRAWN GMK
CHECKED CEP
BID NO. 2024-01
PAGE
ATLAS

SCALE:
VERT. _____
HOR. _____



NO.	DATE	REVISION BLOCK	APPD.

PREPARED BY:
Stantec
200 E. Carrillo Street, Suite 101, Santa Barbara, CA 93101
Phone: (805) 963-9532
CARRIE E. POYTRESS 70,345 EXP. 09/2024
PROJECT ENGINEER R.C.E. DATE



**PLAN AND SECTION VIEW
PROJECT 4
HOT SPRINGS CREEK
MSD PROTECTIVE MEASURES**
MONTECITO, CA

MSD PROJECT NO.
2024-01
SHEET
3 OF 4
DWG. NO.
EXT. A-78-3

ISSUE FOR CONSTRUCTION



PLOT DATE: 6/5/2024 2:55:39 PM
PLOT BY: Poytress, Carrie
34-ENG SAVE DATE: 6/4/2024 12:30:01 PM
DESIGN JTZ
CHECKED CEP

(Condensed Notice for Publication)

NOTICE INVITING SEALED BIDS

**PROTECTIVE MEASURES OF DISTRICT FACILITIES
(JANUARY 2023 STORM)
BID NO. 2024-01
MONTECITO SANITARY DISTRICT**

PUBLIC NOTICE IS HEREBY GIVEN that the Montecito Sanitary District (“District”) will receive sealed bids, electronically, for its BID NO. 2024-01, *Protective Measures of District Facilities (January 2023 Storm)* (“Project”), by or before Wednesday, July 10, 2024 at 4:00 p.m. through its PlanetBids portal. All associated documents, including bonding information, shall be submitted with the bid. Bidders must be registered on the District’s PlanetBids™ portal in order to submit a Bid Proposal and to receive addendum notifications. Each bidder is responsible for making certain that their Bid Proposal is actually submitted/uploaded with sufficient time to be received by PlanetBids prior to the bid opening date and time. Large files may take more time to be submitted/uploaded to PlanetBids so plan accordingly. The receiving time on PlanetBids’ server will be the governing time for acceptability of bids. Telegraphic, telephonic, electronic, and facsimile bids will not be accepted. Bidders are responsible for obtaining all addenda from the District’s PlanetBids portal. If any Addendum issued by the District is not acknowledged online by the Bidder, the PlanetBids system may prevent the Bidder from submitting a Bid Proposal.

Project Description: The Project entails protecting district facilities at multiple locations and varying extents with angular boulders. The Project has been subdivided into four different projects, each with their own location and bid schedules. All project locations are within the Montecito Sanitary District Boundary and the County of Santa Barbara, California. The projects numbers, associated primary asset, and locations are as follows:

Project 1 – Manhole 616-4D: 2845 Sycamore Canyon Rd along Montecito Creek and just northwest of 1250 Pepper Lane.

Project 2 – Manhole 638-4C: 204 Olive Mill Road along Montecito Creek, north of 188 Santa Elena Lane.

Project 3 – Pipe L333-7: Along San Ysidro Creek within the Ennisbrook Owners’ Association, north of Ennisbrook Drive.

Project 4 – Pipe L380-5: Near a private bridge over Hot Springs Creek, a tributary to Montecito Creek, along Meadow Lane, within the Riven Rock community.

Engineer’s Estimate: \$1,100,000

Project documents for the work are available to prospective bidders through the District’s PlanetBids Portal website at www.montsan.org/bids.

In accordance with the provisions of California Public Contract Code § 3300, and Business and Professions Code § 7028.15(e), the contractor and any subcontractors shall be licensed by the contractors’ state licensing board and registered with the California Department of Industrial Relations at the time the contract is awarded. Failure to possess the specified license shall render a bidder’s bid as non-responsive and shall bar award of the contract to any bidder not possessing the specified license at the time of the award.

Pursuant to California Civil Code § 9550, a payment bond is required to be submitted for all projects estimated in excess of \$25,000.00.

The proposed project is a public works project subject to the provisions of Labor Code § 1720 thereby requiring the Contractor to pay the prevailing wage rates for all work performed under the Contract. In addition, the Contractor shall be responsible for compliance with the requirements of Section 1777.5 of the California Labor Code relating to apprentice public works contracts.

The District reserves the right to reject any and all bids.

There will be a mandatory pre-bid conference on *Friday, June 21, 2024, at 10:00 a.m.* at the Montecito Sanitary District Board Room, 1042 Monte Cristo Lane, Santa Barbara, CA 93108. Bidders must attend this pre-bid conference as a requirement for submittal of a bid proposal.

If you have any questions, please contact the District's Engineer for this project, Carrie Poytress at carrie.poytress@stantec.com and CC the District's Engineering Manager, Bryce Swetek, P.E., at bswetek@montsan.org.

MONTECITO SANITARY DISTRICT
John Weigold
General Manager

PUBLISHED: Wednesdays, June 12, 2024, and June 19, 2024



Montecito Sanitary District

1042 Monte Cristo Lane
Santa Barbara, CA 93108

A Public Service Agency

Phone: (805) 969-4200
www.montsan.org

MONTECITO SANITARY DISTRICT STAFF REPORT – 5

DATE: July 17, 2024
TO: Board of Directors
FROM: John Weigold, General Manager
SUBJECT: General Manager Report

The District continues its mission of providing wastewater collection and treatment services. In addition to the daily operations of the District, the following is an update on some of our current ongoing projects and activities.

GM Meetings

Since my last report, I attended the CSRMA Board of Directors meeting via teleconference on June 20; the California Special District Association (CSDA) General Manager Leadership Summit June 23-25; and I drove one of our District vehicles with Director Dorinne Johnson and District Administrator Stephen Williams and his children in the Montecito 4th of July parade.

2024 General Manager Leadership Summit

I attended this event hosted by the CSDA in Anaheim, CA. It was a well attended event with over 600 attendees. I attended seminars including Better District Leadership Through a Productive Partnership Between the Manager and Board; Cybersecurity and IT Strategy for Special District Leaders; How to be a More Strategic Thinker; and Harnessing AI: Strategies for Productivity and Protection for Special Districts.

January 2023 Storms Damage Projects Update

The project went out to bid on June 12 potential award of the project is part of today's meeting. Staff has been working closely with Stantec and Rincon Consultants to file for permits for all four storm damage sites. Staff continues to work with FEMA to determine eligibility.

Wastewater Treatment Plant (WWTP/Plant) Improvements Project

SSG Structural Engineers began sample geotechnical borings of the District property on June 27-28 to commence assessment of the structural condition of the wastewater treatment plant and the surrounding ground conditions. The initial indications are that there are no

significant Geohazards within the site area. Basin sample sequencing is currently being discussed and may be starting this month.

2024 Sewer Main CIPP Lining Project

Staff anticipates contract negotiations with the selected firm to occur within the next new weeks. Permitting discussions with Caltrans and Union Pacific Railroad have commenced.

Channel Drive Sewer Force Main Improvements Project

Staff anticipates contract negotiations with the selected firm to occur within the next few weeks. Permitting discussions Union Pacific Railroad have commenced.

Highway 101 Sewer Crossing Lining Project

Notice of Completion was finalized in June of 2024. Staff will begin seeking project fee reimbursement per the Utility Agreement with SBCAG.

1950 Lemon Ranch Sewer Main Relocation

Construction is on-going as of the week of July 15, 2024, and the project is substantially completed. Staff working with the contractor to get a final inspection.

CIP Progress

Project	Status/Phase	Priority	Comments
Clarifier Maintenance	Construction	High	Started 7/15.
Bisulfite Tank	Construction	High	Started 7/15.
FEMA Rehabilitation (Protective Measures) - Design/Permitting	Pre-construction	High	On-going.
FEMA Rehabilitation (Protective Measures) - Construction	Pre-construction	High	Potential award of contract today.
WWTP Seismic and Materials Study	Active	High	On-going. Basin investigation next.
Manhole Lining Project	Design	High	In Staff review. Anticipated out to bid next week.
Channel Drive Force Main Improvements	RFP	High	Contract negotiations with consultant.
2025 Sewer Main CIPP Lining - Design	RFP	High	Contract negotiations with consultant.
Wastewater Treatment Plant Project - Design and Engineering	Investigation	Medium	Working with Southland, MKN, SSG.
Collection System Master Plan	RFP	Medium	In Distirct review. Anticipated Aug. 2024.
Septic to Sewer Strategic Plan	RFP	Low	In Distirct review. Anticipated Aug. 2024.

Human Resources

Travis Kearney, Collection System Operator IV Step E, submitted his letter of resignation effective July 19, 2024. We wish him the best of luck in his new role!

The District has opened a recruitment for a Collection System Operator-In-Training through Operator IV and have posted the job on the District website, BCWaterJobs.com, and CWEA.org. Applications are due by August 9th at 4:30pm.

Effluent Flow / Rainfall Comparison

